

NS0-527^{Q&As}

NetApp Certified Implementation Engineer - Data Protect

Pass NetApp NS0-527 Exam with 100% Guarantee

Free Download Real Questions & Answers **PDF** and **VCE** file from:

<https://www.pass2lead.com/ns0-527.html>

100% Passing Guarantee
100% Money Back Assurance

Following Questions and Answers are all new published by NetApp
Official Exam Center

- ⚙️ **Instant Download** After Purchase
- ⚙️ **100% Money Back** Guarantee
- ⚙️ **365 Days** Free Update
- ⚙️ **800,000+** Satisfied Customers



QUESTION 1

You want to modify the existing Snapshot copy schedule to allow for more granularity in your ability to recover data after a corruption or loss. In this scenario, which two tools allow you to accomplish this task (Choose two.)

- A. OnCommand System Manager
- B. OnCommand Unified Manager
- C. NetApp SnapCenter
- D. ONTAP CLI

Correct Answer: BD

QUESTION 2

A customer wants to set up an SVM DR relationship to protect a source SVM that is dedicated for NAS file services. This source and destination clusters are running ONTAP 9.5.

In this scenario, which application accomplishes this task?

- A. OnCommand Unified Manager
- B. OnCommand System Manager
- C. SnapCenter
- D. Snap Creator

Correct Answer: B

QUESTION 3

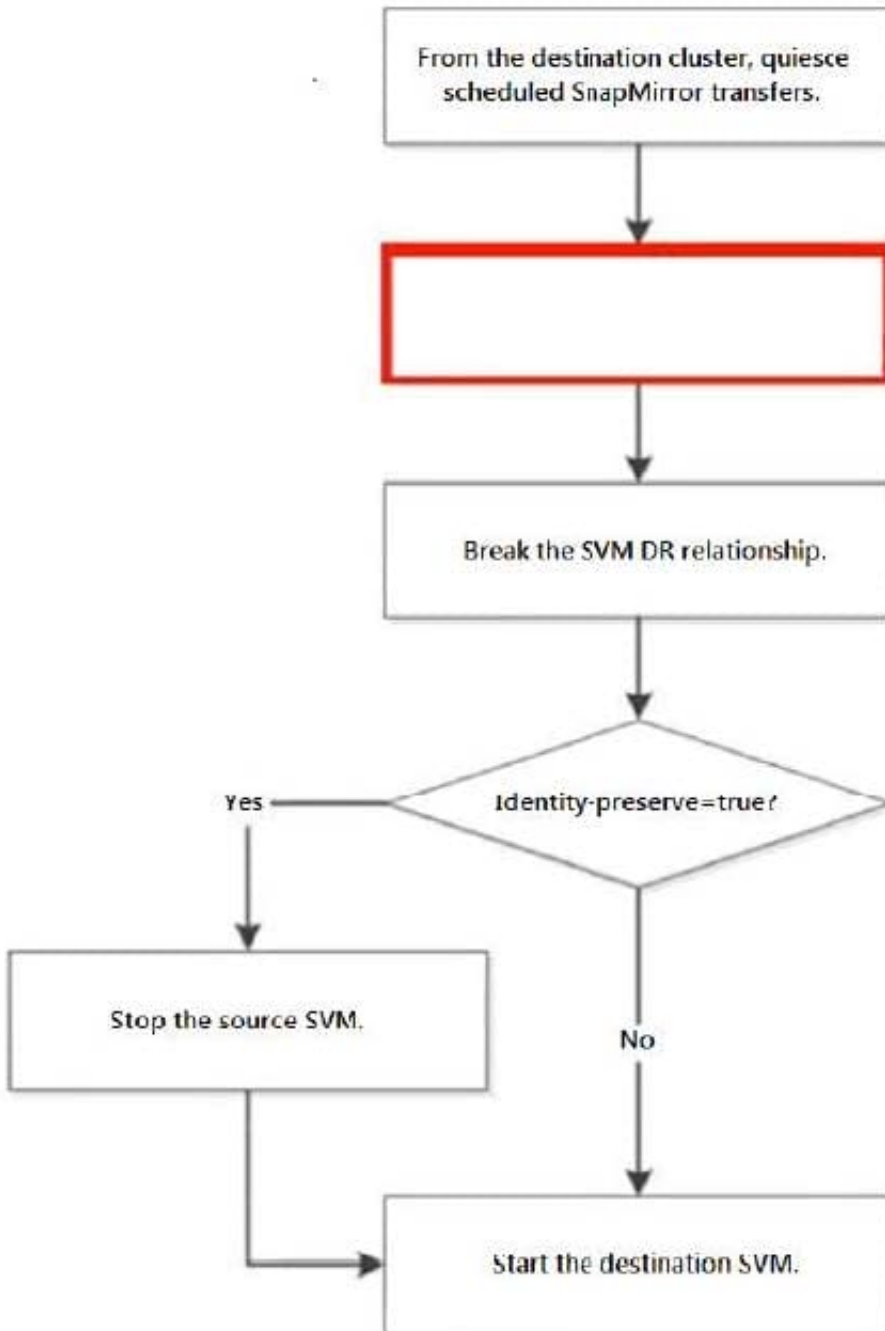
You have a SnapMirror relationship established between two sites and want to verify that the data on the DR site is usable without disturbing the source. In this scenario, which three steps are required to accomplish this task? (Choose three.)

- A. Resynchronize the destination to the source volume, then update the source volume.
- B. Resume the SnapMirror destination, then update the SnapMirror destination.
- C. Quiesce the SnapMirror destination, then break the SnapMirror destination.
- D. Reverse the SnapMirror source and destination, then re-initialize SnapMirror.
- E. Configure the destination volume for data access, then access the data volume from a client.

Correct Answer: ACD

QUESTION 4

Click the Exhibit button.



In an ONTAP environment, an SVM-DR relationship exists between your AFF A220 cluster and your FAS2720 cluster, with identity preserve enabled. You are asked to test the disaster recovery workflow in an upcoming maintenance window. Referring to the exhibit, which step should be performed next to test the recovery workflow?

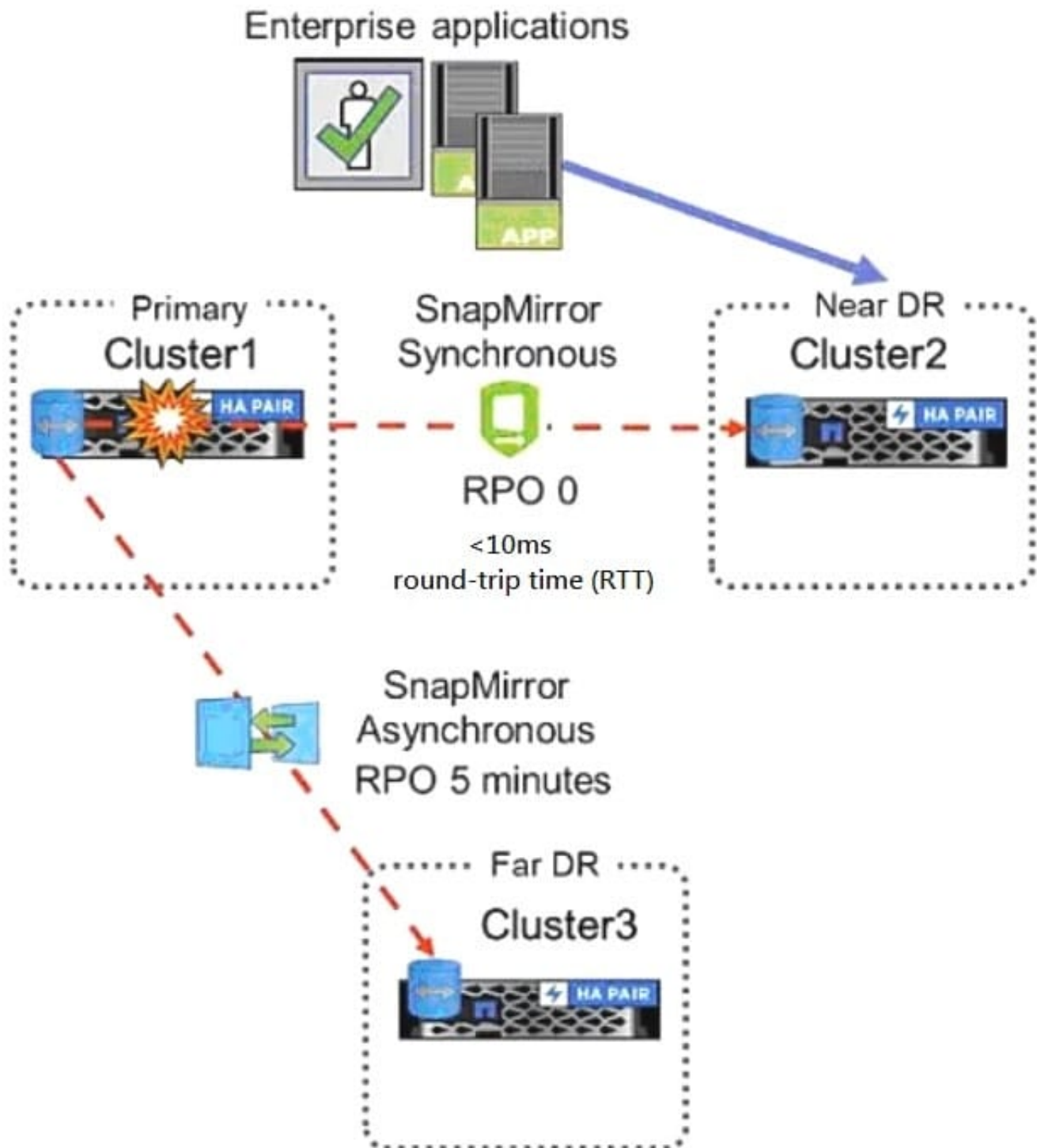
- A. Delete the SVM-DR relationship.
- B. Pause any ongoing transfers.
- C. Abort any ongoing transfers.

D. Update any ongoing transfers.

Correct Answer: C

QUESTION 5

Click the Exhibit button.



Referring to the exhibit, which three would be used to configure the three-way Data Center Disaster Recovery topology replication schedules? (Choose three.)

- A. Active IQ Unified Manager
- B. Active IQ
- C. ONTAP CLI

D. ONTAP Select

E. ONTAP System Manager

Correct Answer: CDE

Reference:http://197.253.9.244/ontap%2095/Cluster%20Admin/2_Student%20Guide/STRSW-ILT-ONTAPADM_StudentGuide.pdf

[Latest NS0-527 Dumps](#)

[NS0-527 PDF Dumps](#)

[NS0-527 Practice Test](#)