

# NSE4-5.4<sup>Q&As</sup>

Fortinet Network Security Expert 4 Written Exam - FortiOS 5.4

## Pass Fortinet NSE4-5.4 Exam with 100% Guarantee

Free Download Real Questions & Answers **PDF** and **VCE** file from:

<https://www.pass2lead.com/nse4-5-4.html>

100% Passing Guarantee  
100% Money Back Assurance

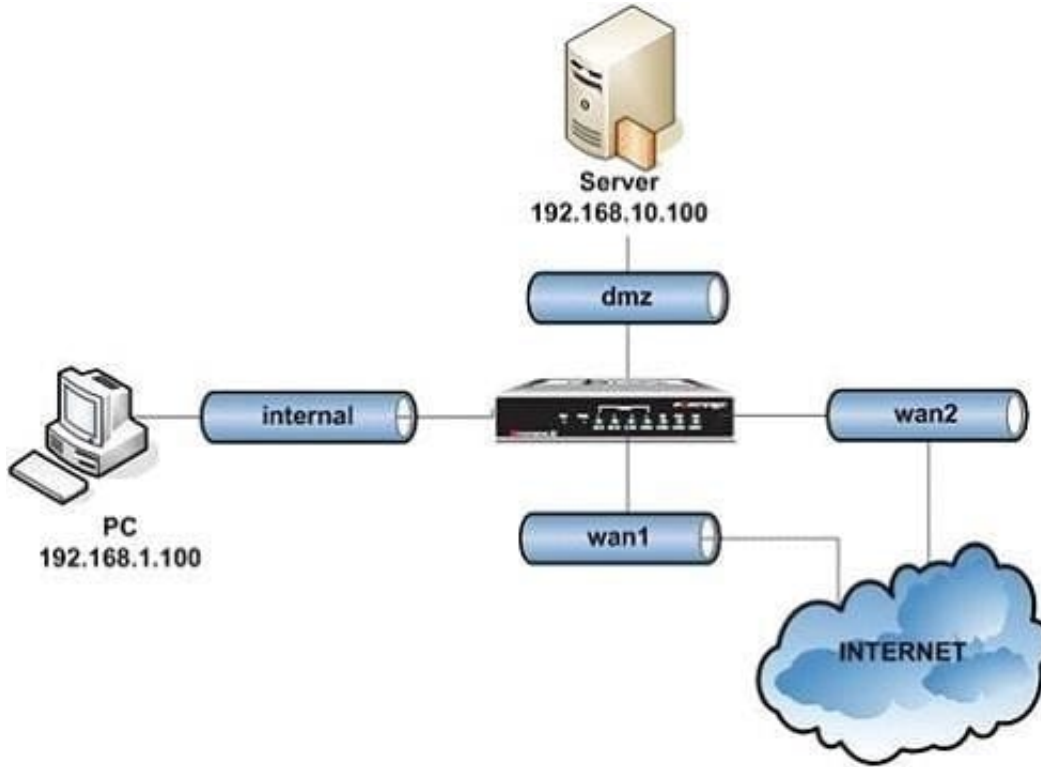
Following Questions and Answers are all new published by Fortinet  
Official Exam Center

-  **Instant Download** After Purchase
-  **100% Money Back** Guarantee
-  **365 Days** Free Update
-  **800,000+** Satisfied Customers



**QUESTION 1**

An intermittent connectivity issue is noticed between two devices located behind the FortiGate dmz and internal interfaces. A continuous sniffer trace is run on the FortiGate unit that the administrator will convert into a .cap file for an off-line analysis with a sniffer application.



Given the high volume of global traffic on the network, which of the following CLI commands will best allow the administrator to perform this troubleshooting operation?

- A. diagnose sniffer packet any
- B. diagnose sniffer packet dmz "" 3
- C. diagnose sniffer packet any "host 192.168.1.100 and host 192.168.10.100 " 3
- D. diagnose sniffer packet any "host 192.168.1.100 and host 192.168.10.100 " 4

Correct Answer: C

**QUESTION 2**

Which action does the FortiGate take when link health monitor times out?

- A. All routes to the destination subnet configured in the link health monitor are removed from the routing table.
- B. The distance values of all routes using interface configured in the link health monitor are increased.
- C. The priority values of all routes using configured in the link health monitor are increased.

D. All routes using the next-hop gateway configured in the link health monitor are removed from the routing table.

Correct Answer: D

---

### QUESTION 3

Each UTM feature has configurable UTM objects such as sensors, profiles or lists that define how the feature will function.

An administrator must assign a set of UTM features to a group of users. Which of the following is the correct method for doing this?

- A. Enable a set of unique UTM features under "Edit User Group".
- B. The administrator must enable the UTM features in an identify-based policy applicable to the user group.
- C. When defining the UTM objects, the administrator must list the user groups which will use the UTM object.
- D. The administrator must apply the UTM features directly to a user object.

Correct Answer: B

---

### QUESTION 4

A FortiGate is operating in NAT/Route mode and configured with two virtual LAN (VLAN) sub-interfaces added to the same physical interface.

Which statement about the VLAN IDs in this scenario is true?

- A. The two VLAN sub-interfaces can have the same VLAN ID only if they belong to different VDOMs.
- B. The two VLAN sub-interfaces must have different VLAN IDs.
- C. The two VLAN sub-interfaces can have the same VLAN ID only if they have IP addresses in the same subnet.
- D. The two VLAN sub-interfaces can have the same VLAN ID only if they have IP addresses in different subnets.

Correct Answer: B

---

### QUESTION 5

Which traffic sessions can be offloaded to a NP6 processor? (Choose two.)

- A. IPv6
- B. RIP
- C. GRE
- D. NAT64

Correct Answer: AD

[Latest NSE4-5.4 Dumps](#)

[NSE4-5.4 Practice Test](#)

[NSE4-5.4 Study Guide](#)