

# 1Z0-567<sup>Q&As</sup>

Primavera P6 Enterprise Project Portfolio Management 8 Essentials

## Pass Oracle 1Z0-567 Exam with 100% Guarantee

Free Download Real Questions & Answers **PDF** and **VCE** file from:

<https://www.pass2lead.com/1z0-567.html>

100% Passing Guarantee  
100% Money Back Assurance

Following Questions and Answers are all new published by Oracle  
Official Exam Center

- ⚙️ **Instant Download** After Purchase
- ⚙️ **100% Money Back** Guarantee
- ⚙️ **365 Days** Free Update
- ⚙️ **800,000+** Satisfied Customers



### QUESTION 1

Cost accounts are hierarchical, and\_\_\_\_\_.

- A. are assigned in the project details
- B. are created and managed at the project level
- C. are applicable to all projects in the EPS
- D. are assigned to users with security

Correct Answer: C

Explanation:

In Primavera P6 we can create cost accounts and associate them with activity resource assignments or expenses in a project. Cost accounts are hierarchical, and

they enable you to track activity costs and earned value according to your organization's specific cost account codes.

References:

---

### QUESTION 2

You are working with a customer that has had Primavera P6 running in a global instance for four years the customer has asked you to come in and review the instance to identify opportunities for optimizing the system. As you look into the coding libraries, you see much duplication of project codes. You recommend that the customer come to consensus on the duplicate codes and values, and then eliminate the redundant codes.

What functionality should you utilize to minimize the potential disruption to the user base?

- A. Send out communication that the codes will be eliminated.
- B. Eliminate the codes and manage usage issues by exception.
- C. Document, usage of each code and value in filters and views.
- D. Merge the codes rather than eliminating them.

Correct Answer: D

Explanation:

Note: Project Codes allow for grouping, sorting, and filtering projects. They are used extensively and allow you to organize your project in many ways, particularly for reporting and when performing portfolio analysis (See Chapter 11, Portfolios). Think of codes as categories or labels; they can be used individually or in combination to group or give totals for different categories in reports or portfolios.

References:

---

### QUESTION 3

Select the true statement regarding live or summarized data.

- A. Live data is used for resource management.
- B. Live data is used for portfolio management.
- C. Summarized data is used for resource management.
- D. Summarized data is used for project management.

Correct Answer: D

Explanation:

The Project Baseline is a single metric for comparison that enables all members of a team to have a shared and consistent set of data against which to evaluate

project progress. There is only one Project Baseline at any time. All pages that display summarized data compare and display data against the Project Baseline.

Reference; P6 EPPM User\ 's Guide, About Baselines

---

### QUESTION 4

Select the statement that best describes a global portfolio.

- A. It is available to single users.
- B. It is assigned by a filter.
- C. It must be manually refreshed.
- D. It is available to all users.
- E. Access is governed by project security.

Correct Answer: D

Explanation:

The drop-down list shows the enterprise project structure by dividing project portfolios into two groups: the "Global Portfolios," which span the entire organization,

or "User Portfolios," which are important to the individual project manager.

---

### QUESTION 5

What is the significance of setting "Summarize project based on high-level resource planning"?

- A. Summarized project data will reflect top-down plans.

- B. Summarized project data will reflect bottoms-up plans.
- C. Summarized project data will reflect actuals pushed from another application.
- D. Summarized project data will be monetized.

Correct Answer: A

Explanation:

Typically, use the High Level Resource Planning option for future projects that are currently planning only high-level resource allocation requirements, or for

projects that are underway, but for which you do not want to assign resources at a detailed activity-level.

Note: `Summarize Project Based on` determines whether the Summarizer calculates and displays rolled-up data based on resource assignments at the activity or

project level. Note 2: You can summarize project data to a specific WBS level when calculating and maintaining summary data.

Summarized Data	Project Settings
<input type="checkbox"/> Contains Summarized Data Only	Character for separating code fields for the WBS tree <input type="text" value="."/>
Last Summarized On <input type="text" value="Nov-12-04 15:29"/>	Fiscal year begins on the 1st day of <input type="text" value="January"/>
Summarize to WBS Level <input type="text" value="2"/>	Baseline for earned value calculations <input checked="" type="radio"/> Project baseline <input type="radio"/> User's primary baseline
Summarize project based on <input type="radio"/> High level resource planning <input checked="" type="radio"/> Detail activity resource assignments	<b>Define Critical Activities</b> <input checked="" type="radio"/> Total Float less than or equal to <input type="text" value="0.00d"/> <input type="radio"/> Longest Path

**QUESTION 6**

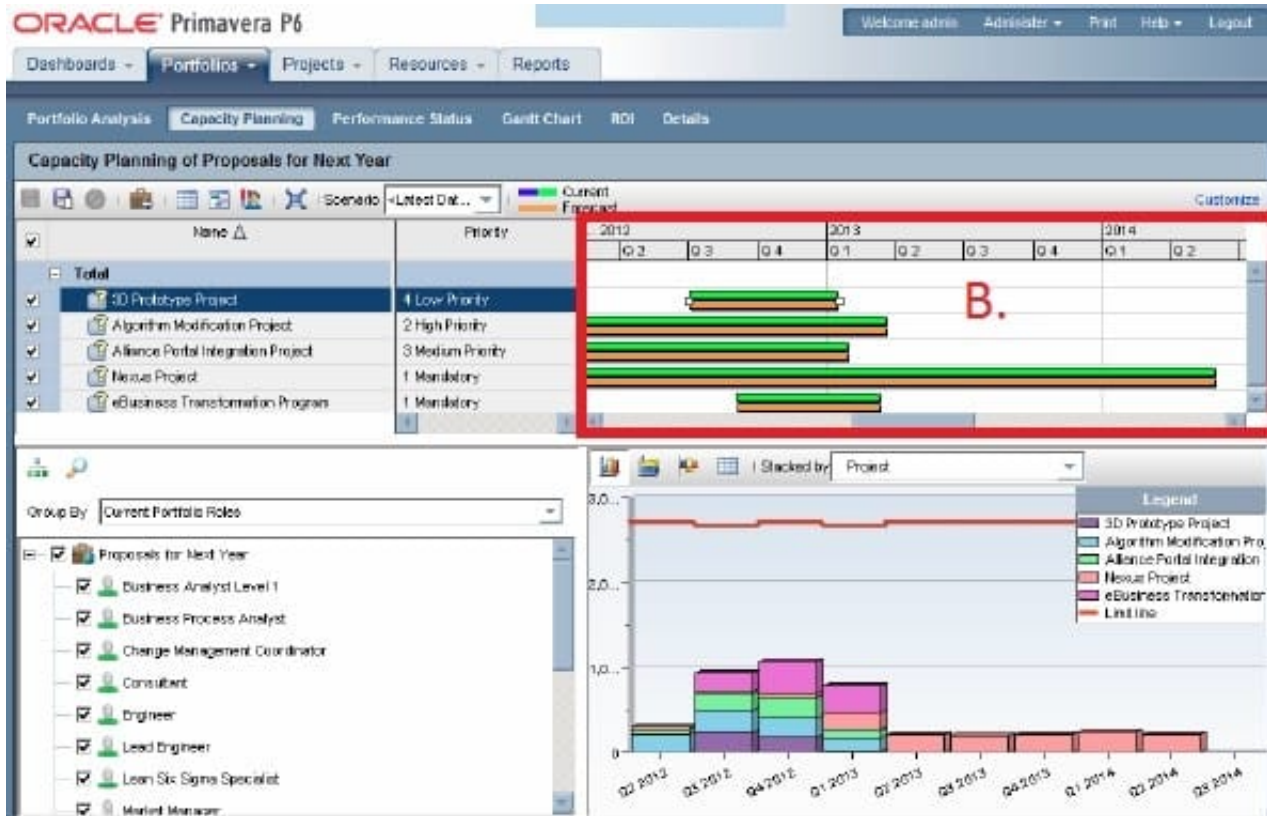
Identify the true statement regarding a Capacity Planning chart.

- A. The Capacity Planning chart displays project allocation over time.
- B. The Capacity Planning chart displays role allocation over time.
- C. The Capacity Planning chart displays resource allocation over time.
- D. The Capacity Planning chart displays unstaffed assignments over time.

Correct Answer: A

Explanation:

Example of Capacity Planning chart:



Frame B is the top-right quarter of the Capacity Planning screen. This is the Gantt area where projects are represented using scheduled dates on the green bar.

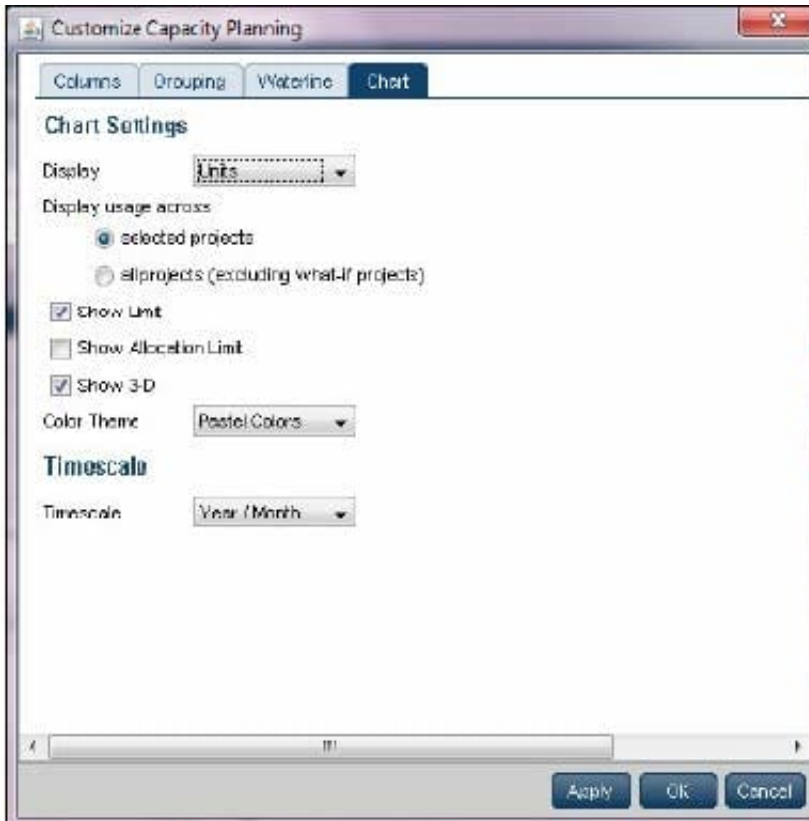
The orange bar is only seen in P6 on this screen and represents the forecast. The forecast bar will be the same as the schedule/current dates bar unless forecast

dates are specifically used (which is not typical). The purpose of the two bars is best used when viewing bids or projects in the future.

Note:

Using the Chart tab, users can change the Capacity Planning view to show Units or Costs in the Gantt chart, and can choose to display either only projects

selected or the entire portfolio. Other adjustments can be made here to create a desired view.



**QUESTION 7**

Select the true statement regarding currencies.

- A. Only one base currency is supported per database.
- B. Currencies are updated daily per exchange rates.
- C. Only 10 currencies are supported in Primavera.
- D. Only two currencies are supported in Primavera.

Correct Answer: A

Explanation:

The base currency is the monetary unit used to store cost data for all projects in the database and is controlled by a global administrative setting in the Project

Management module. The default base currency for Primavera is US dollars (\$). The view currency is the monetary unit used to display cost data in Primavera

and is controlled by a user preference.

Note: All costs are stored in the Based Currency. All costs are stored in the Base Currency and all other Currencies are calculated values using the Base Currency

value and conversion rate.

### QUESTION 8

Your customer's project managers are at a very low level of skill/maturity. Your scope of work includes the creation and management of schedule standards, usage of work products and documents, and schedule-variance tracking to improve estimation processes. Work out of scope includes risk and issue management. You have decided to modify a user-interface view for the project managers. Where do you remove access to risk and issue management?

- A. Remove the Risks and Issues portlets from dashboards.
- B. Remove Risk and Issues from the global security profile.
- C. Remove Risk and Issues from the Protects section.
- D. Remove Risk and Issues licenses.

Correct Answer: A

Explanation:

We remove these two specific portlets (Risk, Issues) for the Dashboards which are used by the Project Managers.

Note:

\*

Dashboards are created with up to 12 windows of data called Portlets

\*

Dashboards build upon those analysis tools and present project and portfolio information in a way that is easy to set up and use. These dashboards can be customized and assigned so that specific users or groups of users can see the same information when they log into the system. Dashboards can be configured to suit individual needs or literally get everyone on the same page.

---

### QUESTION 9

Identify the true statement regarding project templates.

- A. They are managed using Methodology Manager.
- B. They are managed in the web in the same database.
- C. They are created in the client and managed in the web.
- D. They are created using Project Architect.

Correct Answer: B

Explanation:

Oracle Primavera EPPM 8.0 (also known as P6 Release 8.0 or P6R8) introduces users to Project Templates. In previous versions, Oracle Primavera had

Methodology Manager and Project Manager. Now with P6 R8 (P6R8, P6R8.2) Templates can be easily identify and stored within the Project Management

database. This new feature enables the Project Controls/Project Management Office (PMO) having one single global dictionary for project codes, activity codes,

roles, administration preferences and security profiles.

Note 1: Project templates help you create new projects by providing a common set of project properties and items that can be used to create new projects quickly.

This will allow you to get right to implementing your project plan.

Note 2: Templates Features

Same Graphical User Interface (GUI) Single Application One Global Dictionary Templates within the EPS Hierarchy Re-use existing project data Project setting for Templates Apply partial Template information Template Description Project Codes Same GUI

There is a new Enterprise Project Structure (EPS) view that easily allows the addition of Project Templates.

---

#### QUESTION 10

What is the process that must be followed by a system administrator to create a user?

- A. Create an email account to confirm access after user setup.
- B. Assign a global profile, project profile, and responsible manager.
- C. Request approval from the user's manager before completing the profile.
- D. Assign a role to the user before assigning security profiles.

Correct Answer: B

Explanation:

---

#### QUESTION 11

Select two true statements regarding calendars.

- A. Global calendars are available to a subset of projects.
- B. Project calendars are available for the current project.
- C. Only a limited number of calendars can be created.
- D. Resource calendars are applied to all resources with the same primary role.
- E. Activity type determines whether the activity uses resource calendars when scheduling.
- F. Activity calendars are managed by individual users/resources.



Correct Answer: BE

Explanation:

B: Project calendars can only be used within a specific project, and can be assigned to activities within the project. A project can also have a default calendar, which may be either a project calendar or a global calendar.

E: A resource calendar is designed to work for a specific resource. Furthermore, calendars can be assigned to activities and to the resources assigned to that activity.

Note: Calendars describe the time available for project work. A calendar can be defined at three levels: global, project, and resource.

---

### QUESTION 12

Identify the true statement regarding administrative functions in P6 R8.

- A. Administrative functions can be performed in the client, or in the web interface.
- B. Administrative functions can only be performed in the client.
- C. Administrative functions can only be performed in the web interface.
- D. Administrative functions are determined at point of Installation.

Correct Answer: C

Explanation:

For P6 Enterprise, all administrative functions are accessed via the web interface.

---

### QUESTION 13

Select the statement that best describes "Manage Scenarios" functionality.

- A. You can create a portfolio for your own use or for sharing.
- B. You can view portfolio data in different forms.
- C. You can capture a snapshot of project data.
- D. You can select a portfolio to work with or execute commands.

Correct Answer: B

Explanation:

Choose Manage Scenarios display a list of all scenarios available to you, and to modify or delete scenarios. Scenarios are historical snapshots of project group

data you can use to aid analysis of project groups on the Portfolio Analysis and Capacity Planning pages.

For detailed information on modify scenarios, see Modify scenarios. For detailed information on deleting scenarios, see

---

Delete scenarios.

Note: The Manage Scenarios page enables you to view the list of all scenarios available to you. Use this page to modify and delete scenarios, view or add notes

for a scenario, and send e-mail to users associated with a scenario. Each entry represents a project code, EPS node, or portfolio and includes an identifying icon,

name or title, and the number of associated scenarios. Only entries with existing scenarios are defined.

Getting Here: Click the Portfolios menu and choose Manage Scenarios

References:

---

#### QUESTION 14

You are in a governance organization that has established a project management methodology with work product and document requirements that must be included in every project. You are doing an audit prior to a gate review for a specific project. You are fairly certain that the project manager and project are in compliance with these requirements, but you cannot see the required work products and documents in the project workspace. How can you solve this problem?

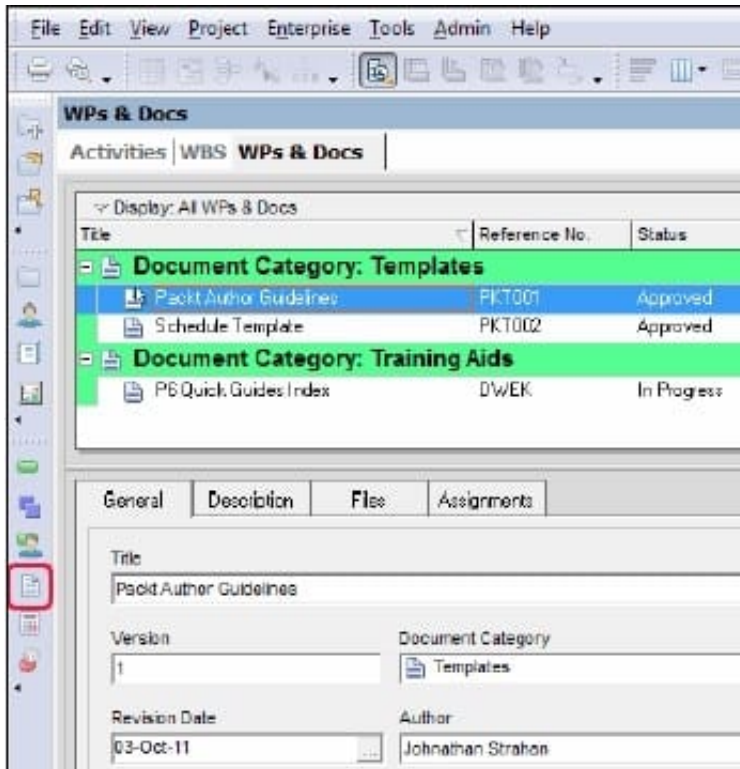
- A. Go to Activities and search for the Work Products and Documents by using an Activity view.
- B. Go to a dashboard and look for the Work Products and Documents in a portlet.
- C. Create a global activity code for required Work Products and Documents to call out activities.
- D. Go to the Project section and click Work Products and Documents to view the portlet.

Correct Answer: D

Explanation:

Before you can assign WPs and Docs, you must create them at the project level. On the left-hand toolbar, click on the icon to open up the WPs and Docs window

The WPs and Docs window is shown in the following screenshot:



Here you can add new documents to your project and categorize them. Note: Work Products and Documents (WPs and Docs) allows you to provide documentation for the project. Examples include material safety data sheets, punch lists, specifications, project manager notes and reports, product guides, and more. To add a document, choose Assign, and select the appropriate document. You may

#### QUESTION 15

You are a program manager for a group of 10+ projects. You actually have a dedicated node for each program, and your owned projects reside under each node. Each program has its own unique requirements for viewing activity data.

You do not want to ask for activity codes that would be visible to the entire organization. Which activity coding solution would serve the needs of the project managers in your programs?

- A. Create global activity codes.
- B. Create user activity codes.
- C. Create project activity codes.
- D. Create EPS activity codes.

Correct Answer: D

Explanation:

EPS activity codes can be used only in projects that belong to a specified EPS, including its subordinate EPS nodes, if any.

Note:

\*

An activity code can be designated as one of three types: Global, EPS, or project.

\*

Activity Codes can be defined through the Administer | Enterprise Data dialog, where they can be set at the Global, EPS, and Project level. Activity codes help to sort, filter, and group activities.

\*

Some data can be stored either at the enterprise level, or at the project level. One such example is activity codes. Some activity codes may be enterprise, perhaps CSI codes to identify the type of work. Others, such as the specific floor in a multi-story construction, are particular to one project and meaningless in others.

References:

[1Z0-567 Study Guide](#)

[1Z0-567 Exam Questions](#)

[1Z0-567 Braindumps](#)