



1Y0-201^{Q&As}

Managing Citrix XenDesktop 7.6 Solutions exam

Pass Citrix 1Y0-201 Exam with 100% Guarantee

Free Download Real Questions & Answers **PDF** and **VCE** file from:

<https://www.pass4lead.com/1y0-201.html>

100% Passing Guarantee
100% Money Back Assurance

Following Questions and Answers are all new published by Citrix
Official Exam Center

-  **Instant Download** After Purchase
-  **100% Money Back** Guarantee
-  **365 Days** Free Update
-  **800,000+** Satisfied Customers



**QUESTION 1**

A Citrix Administrator needs to obtain logs from Machine Creation Services. Which .config file should the administrator manually modify to enable logging?

- A. BrokerService.exe.Config
- B. Citrix.Configuration.SdkWcfEndpoint.exe.Config
- C. Citrix.MachineIdentity.SdkWcfEndpoint.exe.Config
- D. Citrix.MachineCreation.SdkWcfEndpoint.exe.Config

Correct Answer: D

QUESTION 2

Scenario: A Citrix Administrator changed a policy setting in Citrix Studio and assigned the policy to the default user group XDWin8Users. The administrator then tested the new setting with User1, who is a member of the XDWin8Users group. After logging on with User1, the administrator finds that the new setting is NOT working. What is the first step the administrator should take to investigate this issue?

- A. Use the Modeling Wizard in Citrix Studio.
- B. Generate a Resultant Set of Policy report on a Domain Controller.
- C. Generate a Resultant Set of Policy report on the Desktop OS machines.
- D. Use the Modeling Wizard in Microsoft Group Policy Management console.

Correct Answer: D

QUESTION 3

SIMULATION Scenario: Members of the HR user group at CCH need access to desktops running Windows 8. The desktops provided to HR users must be in a separate device collection named HR. As part of a pilot, a Citrix Administrator must use the Provisioning Services Console to create the device collection and initially four target devices with plans to add 20 more. The target devices named Win801T Win802. Win803 and Win804 should be assigned the CCH_Win8 vDisk and those devices should be assigned to the HR OU. XenDesktop is NOT being used for the HR team at the moment. The hypervisor information for the environment is: XenServer IP Address: 192.168.10.5 Username: root Password: Password 1 Tasks:

1.

Create a device collection named HR.

2.

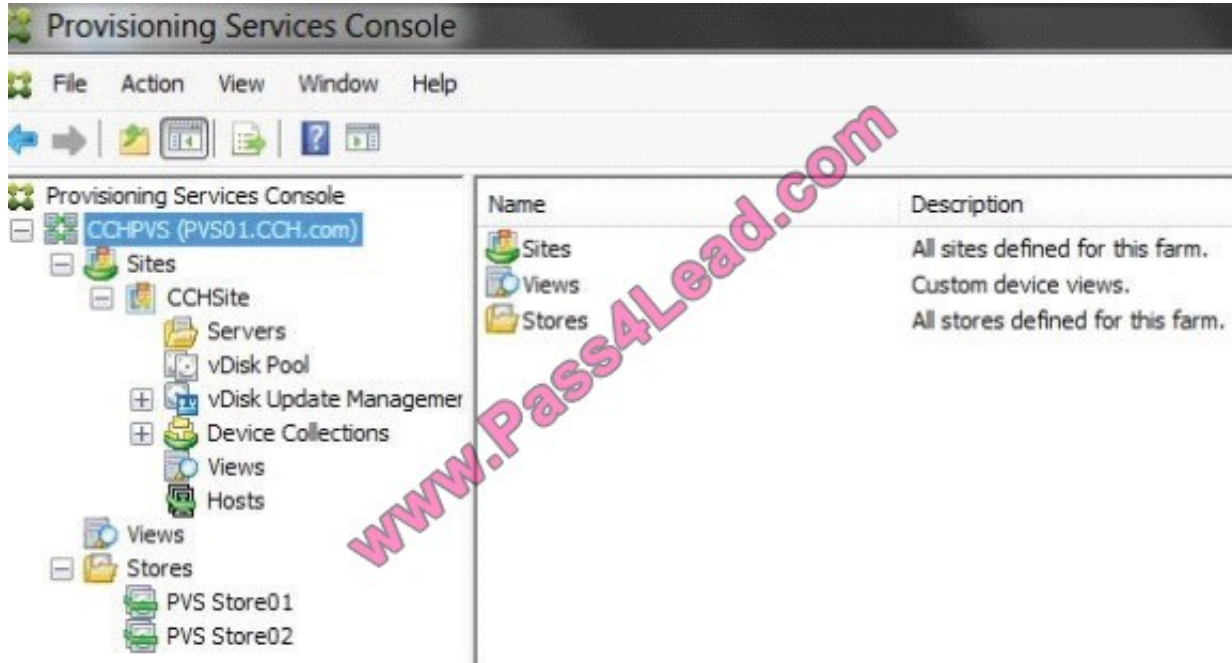
Create four target devices named Win801, Win802. Win803 and Win804, and add the target devices to the HR device



collection.

3.

Ensure the target devices are configured to meet the requirements outlined in the scenario.



Correct Answer:

- 1) In Provisioning Services Console, right click on "Device" and click on Create Device Collection.
- 2) In the "General" type in the name "HR" and click on OK.
- 3) Right click on "CCHSite" node and select Streamed Virtual Machine Setup.
- 4) From the "Hypervisor connection" dialog window type in the Hypervisor IP address, username and password provided then click on Next.
- 5) From the "Virtual machine template" dialog window select the correct virtual machine template then click on Next.
- 6) From the "vDisk" dialog window select CCH_Win8 then click on Next.
- 7) From the "Collection" dialog window select HR from the drop-down window then click on Next.
- 8) From the "Virtual Machines" dialog window, increase the "Number of virtual machines to create" to 4 then click on Next.
- 9) From the "Active Directory" dialog window verify "Create new accounts" is selected then click on Next.
- 10) From the "Active Directory accounts and location" dialog windows select the HR OU; in the "Account naming scheme" field type in the "Basename#" of Win8##, select 0-9 from the drop down to the right, then click on Next.
- 11) From the "Summary" dialog windows click on Finish.
- 12) When the devices are finished creating click on Done.



13) You can verify the new devices were created correctly in the HR Device Collection you created initially.

QUESTION 4

Scenario: A Citrix Administrator must provide a new application to 50 users and wants to use the most cost-effective application delivery method. These users perform well-defined tasks and do NOT require personalization or offline access to

applications.

What type of application delivery method should the administrator consider?

- A. Persistent virtual desktops
- B. Hosted Server OS machine
- C. Virtual machine hosted apps
- D. Locally streamed virtual hard disk

Correct Answer: B

QUESTION 5

A Citrix Administrator needs to update a master image to deliver an updated application to Desktop OS machines. Which steps should the administrator take next to complete the update of the Desktop OS machines?

- A. Update the master image, then update the Delivery Group.
- B. Update a Desktop OS machine, then update the Delivery Group.
- C. Update the master image, then update the session machine catalog.
- D. Update a Desktop OS machine, then update the session machine catalog.

Correct Answer: C

QUESTION 6

Scenario: An organization has headquarters based in London and has branch offices in New York and Beijing. Citrix XenDesktop was recently implemented in the environment. All Desktop OS machines are located within the London

Datacenter while print servers are located in each branch office. Users have been complaining that printing from the branch offices is slow. All branches are connected through a Wide Area Network (WAN). QoS has been implemented for all

ICA/HDX traffic.

How could a Citrix Administrator optimize the printing performance for branch office users without asking for additional investments from management?



- A. Disable client auto-created printers.
- B. Disable direct connections to the print server.
- C. Increase the WAN link speed to the branch offices.
- D. Adjust printing bandwidth as part of the overall user session bandwidth limit.

Correct Answer: B

QUESTION 7

Scenario: A Citrix Administrator is unable to connect to the XenServer hosts through XenCenter. Server and Desktop OS machines hosted in the XenServer resource pool are functioning as expected. What is the likely cause of this issue?

- A. Pool master failure
- B. HA Heartbeat failure
- C. License Server failure
- D. Storage Area Network failure

Correct Answer: A

QUESTION 8

Scenario: While attempting to add machines to a Session Machine Catalog using Machine Creation Services, a Citrix Administrator receives an error message. Click on the Exhibit button to view the error message.



In which Citrix Studio node should the administrator go to resolve this error?



- A. Hosting
- B. Controllers
- C. Configuration
- D. Machine Catalogs

Correct Answer: A

QUESTION 9

Scenario: Users complain that it is taking significantly longer to see their Desktop OS machines compared to yesterday. The Helpdesk team is able to see active connections while the users are waiting. What could a Citrix Administrator view to compare the Desktop OS machine launch times?

- A. AAA logs in NetScaler Gateway
- B. Event log on the Citrix StoreFront server
- C. Logon duration details from Citrix Director
- D. Configuration logging report on Citrix Studio

Correct Answer: C

QUESTION 10

Scenario: A Citrix Administrator needs to install a new application on a Desktop OS machine. A new ISO image was added to the CIFS file share that is attached to the storage repository. When the administrator tries to install the application,

the ISO is NOT showing as available.

Which xe command should the administrator run to make the ISO image available?

- A. sr-scan
- B. sr-update
- C. vm-cd-add
- D. vm-disk-add

Correct Answer: C

QUESTION 11

Scenario: A Citrix Administrator recently created and deployed a new vDisk to all Desktop OS machines. The morning after making that change, users are unable to launch their Desktop OS machines. The administrator finds that the Desktop



OS machines associated with the new vDisk are shut down and in maintenance mode.

How could the administrator resolve this issue?

- A. Disable Maintenance mode on the device collection.
- B. Select '\\Enable Active Directory machine account password management\\' on the vDisk.
- C. Create Desktop OS machine Active Directory accounts manually and restart all the machines.
- D. Disable the machine account password changes policy through the GPO in the organizational unit where the target devices are located.

Correct Answer: B

QUESTION 12

Scenario: When remote users attempt to log on through NetScaler Gateway, they are presented with the following error message:

'Cannot Complete your Request.'

When the same users are in the office, they are able to log on successfully. What should a Citrix Administrator change to resolve this issue?

- A. The Callback URL to match the external URL of the NetScaler Gateway.
- B. The NetScaler Gateway Authentication method to '\\Enable Pass-through\\'.
- C. The StoreFront URL to match the external URL of the NetScaler Gateway.
- D. The External Beacon address to match the external URL of the NetScaler Gateway.

Correct Answer: B

[1Y0-201 PDF Dumps](#)

[1Y0-201 Practice Test](#)

[1Y0-201 Braindumps](#)



To Read the [Whole Q&As](#), please purchase the [Complete Version](#) from [Our website](#).

Try our product !

100% Guaranteed Success

100% Money Back Guarantee

365 Days Free Update

Instant Download After Purchase

24x7 Customer Support

Average 99.9% Success Rate

More than 800,000 Satisfied Customers Worldwide

Multi-Platform capabilities - [Windows](#), [Mac](#), [Android](#), [iPhone](#), [iPod](#), [iPad](#), [Kindle](#)

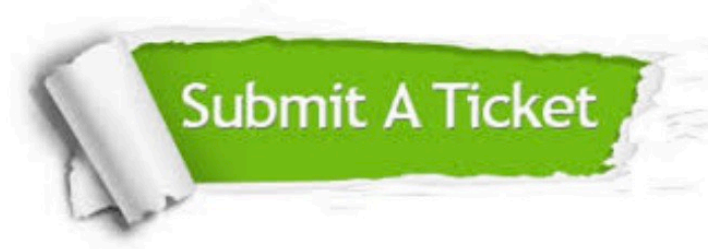
We provide exam PDF and VCE of Cisco, Microsoft, IBM, CompTIA, Oracle and other IT Certifications. You can view Vendor list of All Certification Exams offered:

<https://www.pass4lead.com/allproducts>

Need Help

Please provide as much detail as possible so we can best assist you.

To update a previously submitted ticket:



 <p>One Year Free Update Free update is available within One Year after your purchase. After One Year, you will get 50% discounts for updating. And we are proud to boast a 24/7 efficient Customer Support system via Email.</p>	 <p>Money Back Guarantee To ensure that you are spending on quality products, we provide 100% money back guarantee for 30 days from the date of purchase.</p>	 <p>Security & Privacy We respect customer privacy. We use McAfee's security service to provide you with utmost security for your personal information & peace of mind.</p>
---	---	--

Any charges made through this site will appear as Global Simulators Limited.

All trademarks are the property of their respective owners.

Copyright © pass4lead, All Rights Reserved.