

100% Money Back
Guarantee

Vendor: Cisco

Exam Code: 300-070

Exam Name: Implementing Cisco IP Telephony & Video,
Part 1(CIPTV1)

Version: Demo

DEMO

QUESTION 1

Refer to the exhibit.

```
!  
ccm-manager redundant-host 10.1.5.3  
ccm-manager mgcp  
ccm-manager fax protocol cisco  
ccm-manager config  
!  
mgcp  
mgcp call-agent 10.1.5.2 2427 service-type mgcp  
version 0.1  
no mgcp package-capability res-package  
no mgcp timer receive-rtcp  
mgcp fax t38 ecm  
!  
mgcp profile default  
!
```

A Cisco Unified Communications Manager group is configured with the subscriber (10.1.5.3) listed first and the publisher (10.1.5.2) listed second. Which Cisco Unified Communications Manager is used for incoming calls through an MGCP gateway?

- A. the publisher
- B. both the publisher and subscriber in a round-robin format
- C. the first server listed in the Cisco Unified Communications Manager group list
- D. the subscriber

Correct Answer: A

QUESTION 2

What function does the device pool perform?

- A. It separates user and physical location information.
- B. It sets the default device parameters for all IP phones in the cluster.
- C. It sets the location bandwidth used between different locations.
- D. It provides a single point of configuration for every device in a Cisco Unified Communications Manager cluster.

Correct Answer: A

QUESTION 3

Which three steps are needed to enable time-of-day call routing? (Choose three.)

- A. Configure an access list.
- B. Configure a time period.
- C. Configure a time schedule.
- D. Configure a route pattern.
- E. Configure a partition.
- F. Configure dial rules.
- G. Configure a calling search space.

Correct Answer: BCG

QUESTION 4

Which three descriptions are true? (Choose three.)

- A. The class of service is a parameter that is used for traffic classification and marking at Layer 2.
- B. The IP precedence is a parameter that is used for traffic classification and marking at Layer 2.
- C. The differentiated services code point is a parameter that is used for traffic classification and marking at Layer 2.
- D. The class of service is a parameter that is used for traffic classification and marking at Layer 3.
- E. The IP precedence is a parameter that is used for traffic classification and marking at Layer 3.
- F. The differentiated services code point is a parameter that is used for traffic classification and marking at Layer 3.

Correct Answer: AEF

QUESTION 5

Which tool can you use to verify and troubleshoot a dial plan?

- A. Audit Log Configuration
- B. Dialed Number Analyzer
- C. CDR Analysis and Reporting
- D. Troubleshooting Trace Settings

Correct Answer: B

QUESTION 6

Which three commands show the output of an active video call? (Choose three.)

- A. show vrm active_calls
- B. show call active video brief
- C. show voip rtp connections
- D. show voice call
- E. show voice call summary
- F. show video dsp

Correct Answer: BCE

QUESTION 7

Which three options can belong to specific partitions? (Choose three.)

- A. voice-mail servers
- B. directory numbers
- C. translation patterns
- D. gateways
- E. IP phones
- F. route patterns

Correct Answer: BCF

QUESTION 8

What are two characteristics that are associated with the End User and User account types? (Choose two.)

- A. They cannot use LDAP.
- B. They are used to authorize applications.
- C. They can utilize LDAP.

- D. The Application is associated with the End User and User account types.
- E. They can be listed in a directory.

Correct Answer: CD

QUESTION 9

Route lists determine the order of preference for route group usage. If a route list is configured, what is the minimum number of route groups that you must configure?

- A. 1
- B. 2
- C. 3
- D. 4
- E. 5
- F. 6
- G. 7
- H. 8

Correct Answer: A

QUESTION 10

When the Cisco IOS router or gateway receives a call setup request, what is the PID value of the default dial peer?

- A. ID:3
- B. PID:6
- C. PID:0
- D. PID:4
- E. PID:5
- F. PID:1
- G. PID:2
- H. PID:7

Correct Answer: C

QUESTION 11

Managers have asked to be able to have an extension call them back if it is busy when they try to call it. In what two places can this feature be assigned to the Managers phone? (Choose two.)

- A. Device Settings > Softkey Template
- B. Device Settings > Default Device Profile Configuration
- C. Device Settings > Phone Button Template
- D. Device Settings > Device Profile
- E. Device Settings > Device Defaults
- F. Device Settings > Firmware Load Information

Correct Answer: AD

QUESTION 12

An organization with a centralized dial plan has user extensions as the last four digits of the external DID number. Some users at the head office have overlapping extensions with the users at the branch offices. Which action fixes this issue without changing user extensions and allowing users to call each other across sites?

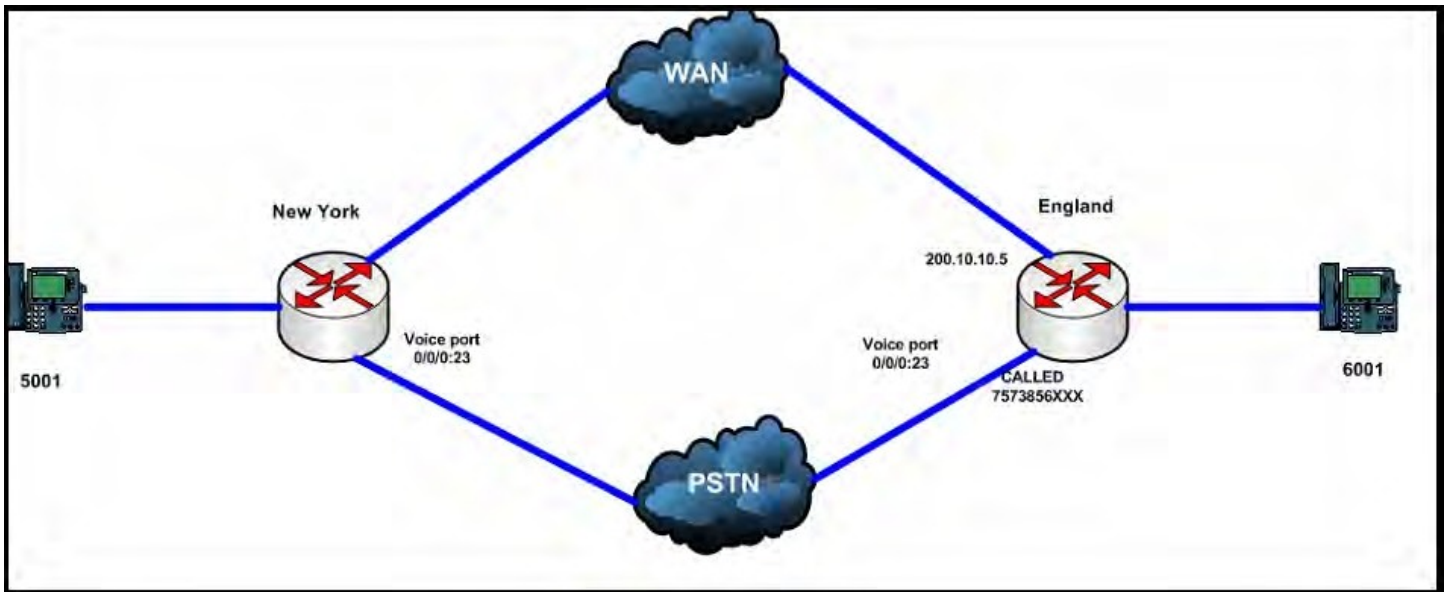
- A. Use site codes.
- B. Use different CSSs for both sites.

- C. Place both extensions in different partitions.
- D. Change the number of digits in the internal extensions.

Correct Answer: A

QUESTION 13

Refer to the exhibit and configuration output.



A user in New York (5001) is trying to call a user in London (6001), but the call cannot be completed. Assuming that the WAN uplink is failing and the voice traffic has to go out toward the PSTN, which command do you need to add to dial peer to solve this issue?

dial-peer voice 3 pots

destination-pattern 6...

preference 1

port 0/0/0:23

dtmf-relay sip-notify

- A. num-exp 512602 6001
- B. prefix 757385
- C. forward-digits 2
- D. forward-digits 4
- E. prefix 5126

Correct Answer: B

QUESTION 14

Which two codecs are required for Cisco WebEx Enabled TelePresence? (Choose two.)

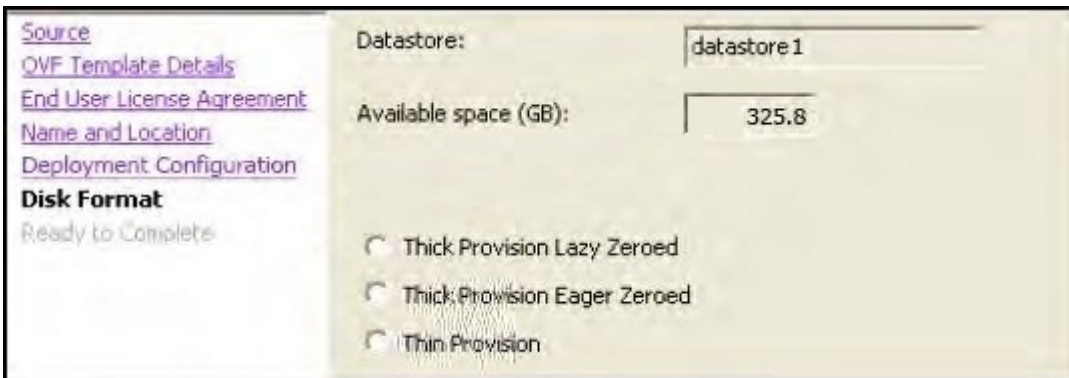
- A. G.711 codec for audio

- B. H.264 codec for video
- C. G.729 codec for audio
- D. G.711 or G.729 codec for audio
- E. H.263 codec for video
- F. H.264 or H.263 codec for video

Correct Answer: AB

QUESTION 15

Refer to the exhibit.



Which option is the most highly recommended option to install Cisco TelePresence Conductor on the virtual machine?

- A. Thick Provision Eager Zeroed
- B. Thick Provision Lazy Zeroed
- C. Thick Provision
- D. Thin Provision

Correct Answer: B

QUESTION 16

Which three CLI commands allow you to verify the correct VoIP dial-peer matching? (Choose three.)

- A. debug ccsip messages
- B. debug voip ccapi inout
- C. debug dialpeer match
- D. debug voip dialpeer inout
- E. show dialplan number

Correct Answer: BDE

QUESTION 17

Which three items have a calling search space? (Choose three.)

- A. transcoder
- B. gateways
- C. phone lines
- D. phones
- E. partitions
- F. AAR groups

Correct Answer: BCD

QUESTION 18

Which three options are components of Media Resources Architecture? (Choose three)

- A. Music on hold.
- B. Media Resource Manager.
- C. Media Resource Group.
- D. Route list.
- E. Route group
- F. Media Resource Group List.

Correct Answer: BCF

QUESTION 19

Which mechanism is often configured on the edges of a network to control the maximum rate of traffic that is sent or received on an interface and to classify the traffic into priority levels or class of service?

- A. routing
- B. shaping
- C. policing
- D. access control
- E. traffic regulation

Correct Answer: C

QUESTION 20

Which two types of encoding are available to configure a T1 controller for CAS? (Choose two.)

- A. B8SF
- B. AMI
- C. B8ZS
- D. SF
- E. AME
- F. ESF

Correct Answer: BC

To Read the [Whole Q&As](#), please purchase the [Complete Version](#) from [Our website](#).

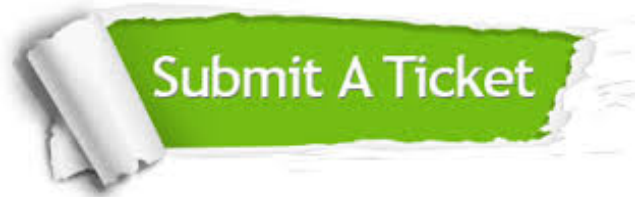
Trying our product !

- ★ **100%** Guaranteed Success
- ★ **100%** Money Back Guarantee
- ★ **365 Days** Free Update
- ★ **Instant Download** After Purchase
- ★ **24x7** Customer Support
- ★ Average **99.9%** Success Rate
- ★ More than **69,000** Satisfied Customers Worldwide
- ★ Multi-Platform capabilities - **Windows, Mac, Android, iPhone, iPod, iPad, Kindle**

Need Help

Please provide as much detail as possible so we can best assist you.

To update a previously submitted ticket:



 One Year Free Update <p>Free update is available within One Year after your purchase. After One Year, you will get 50% discounts for updating. And we are proud to boast a 24/7 efficient Customer Support system via Email.</p>	 Money Back Guarantee <p>To ensure that you are spending on quality products, we provide 100% money back guarantee for 30 days from the date of purchase.</p>	 Security & Privacy <p>We respect customer privacy. We use McAfee's security service to provide you with utmost security for your personal information & peace of mind.</p>
-----------------------------------------------------------------------------------------------------------------------------------------------------------------------------------------------------------------------------------------------------------------------------------------------------------------------------	---------------------------------------------------------------------------------------------------------------------------------------------------------------------------------------------------------------------------------------------------------	--------------------------------------------------------------------------------------------------------------------------------------------------------------------------------------------------------------------------------------------------------------------------------

[Guarantee & Policy](#) | [Privacy & Policy](#) | [Terms & Conditions](#)

Any charges made through this site will appear as Global Simulators Limited.

All trademarks are the property of their respective owners.

Copyright © 2004-2015, All Rights Reserved.