

100% Money Back
Guarantee

Vendor: Cisco

Exam Code: 300-208

Exam Name: Implementing Cisco Secure Access Solutions

Version: Demo

QUESTION 1

By default, how many days does Cisco ISE wait before it purges the expired guest accounts?

- A. 1
- B. 10
- C. 15
- D. 20

Correct Answer: C

Explanation

QUESTION 2

What are the initial steps to configure an ACS as a TACACS server?

- A. 1. Choose Network Devices and AAA Clients > Network Resources.2. Click Create.
- B. 1. Choose Network Resources > Network Devices and AAA Clients.2. Click Create.
- C. 1. Choose Network Resources > Network Devices and AAA Clients.2. Click Manage.
- D. 1. Choose Network Devices and AAA Clients > Network Resources.2. Click Install.

Correct Answer: B

Explanation

QUESTION 3

Scenario:

Currently, many users are experiencing problems using their AnyConnect NAM supplicant to login to the network. The rr desktop support staff have already examined and verified the AnyConnect NAM configuration is correct.

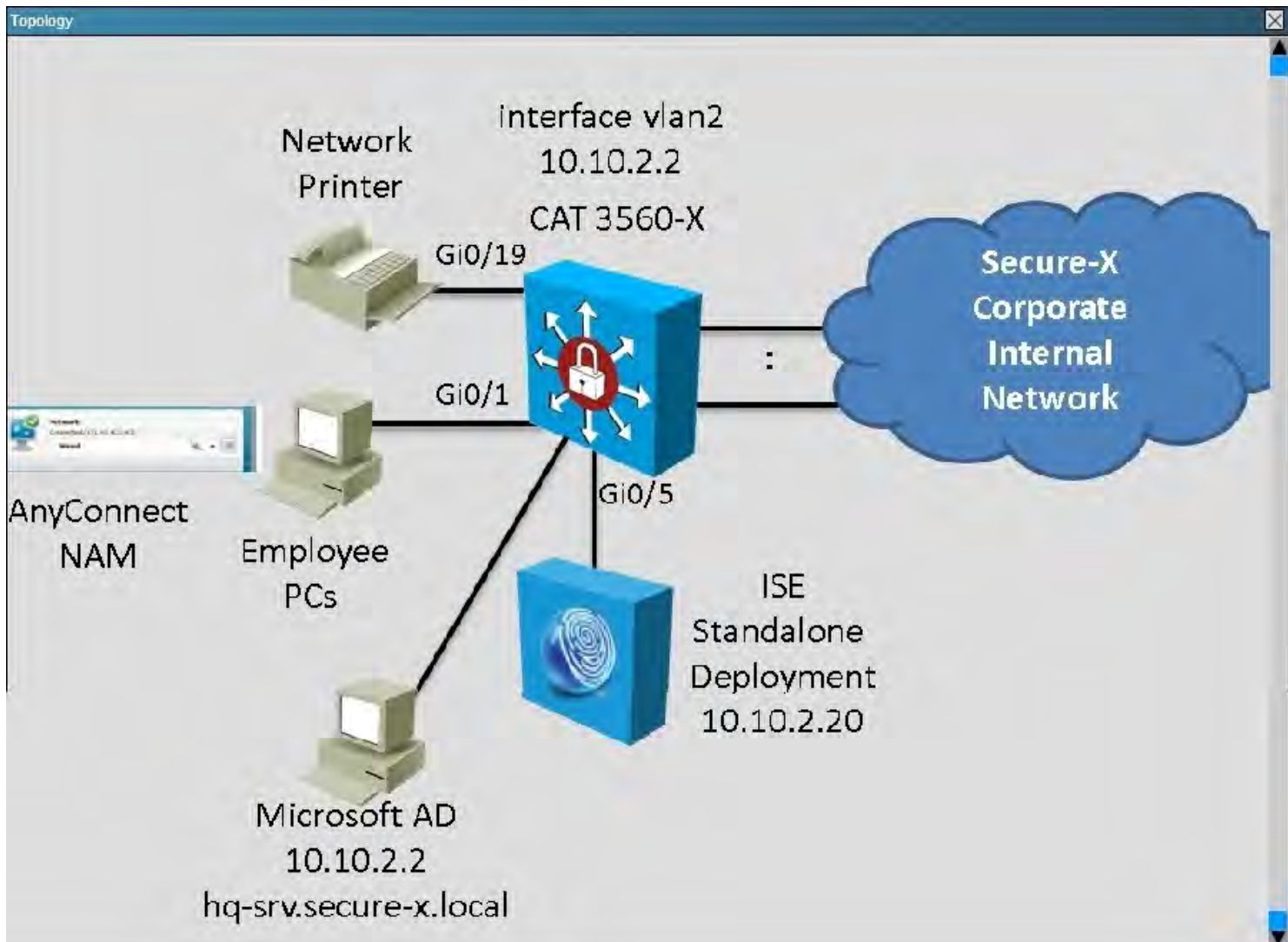
In this simulation, you are tasked to examine the various ISE GUI screens to determine the ISE current configurations to help isolate the problems. Based on the current ISE configurations, you will need to answer three multiple choice questions.

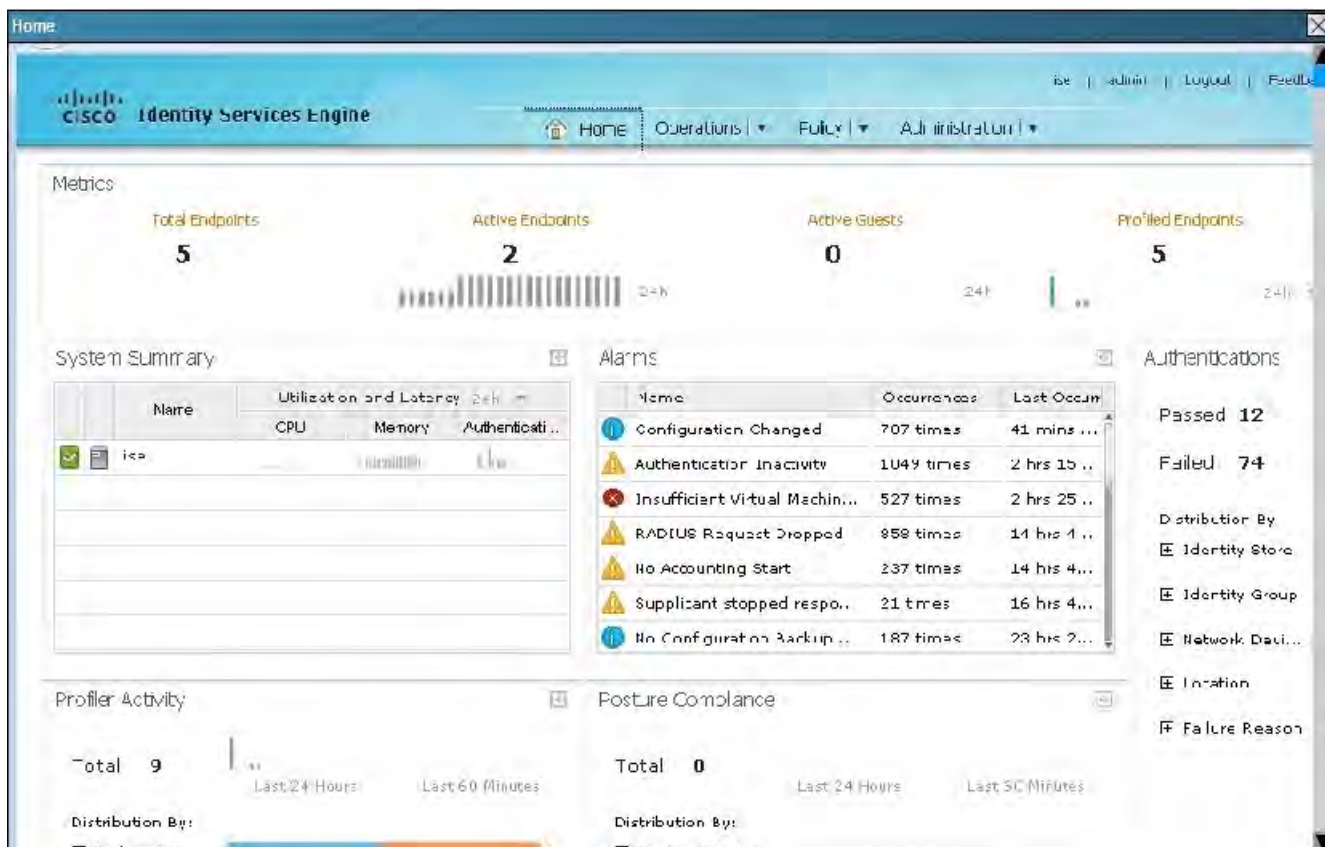
To access the ISE GUI, click on the ISE icon in the topology diagram to access the ISE GUI.

Not all the ISE GUI screen are operational in this simulation and some of the ISE GUI operations have been reduced in this simulation.

Not all the links on each of the ISE GUI screen works, if some of the links are not working on a screen, click Home to go back to the Home page first. From the Home page, you can access all the required screens.

To view some larger GUI screens, use the simulation window scroll bars. Some of the larger GUI screens only shows partially but will include all information required to complete this simulation.





Which two of the following statements are correct? (Choose two.)

- A. The ISE is not able to successfully connect to the `hq-srv.secure-x.local` AD server.
- B. The ISE internal endpoints database is used to authenticate any users not in the Active Directory domain.
- C. The ISE internal user database has two accounts enabled: `student` and `test` that map to the Employee user identity group.
- D. `Guest_Portal_Sequence` is a built-in identity source sequence.

Correct Answer: BD

Explanation

Explanation/Reference:

QUESTION 4

Which two NAC agents support file remediation? (Choose two.)

- A. Web Agent for Macintosh
- B. NAC Agent for Windows
- C. NAC Agent for Macintosh
- D. Web Agent for UNIX
- E. Web Agent for Windows

Correct Answer: BE

Explanation

QUESTION 5

In Cisco ISE, which two actions can be taken based on matching a profiler policy? (Choose two).

- A. exception
- B. network scan (NMAP)

- C. delete endpoint
- D. automatically remediate
- E. create matching identity group

Correct Answer: AB

Explanation

QUESTION 6

Which statement about IOS accounting is true?

- A. A named list of AAA methods must be defined.
- B. A named list of accounting methods must be defined.
- C. Authorization must be configured before accounting.
- D. A named list of tracking methods must be defined.

Correct Answer: C

Explanation

Explanation/Reference:

QUESTION 7

Which statement about system time and NTP server configuration with Cisco ISE is true?

- A. The system time and NTP server settings can be configured centrally on the Cisco ISE.
- B. The system time can be configured centrally on the Cisco ISE, but NTP server settings must be configured individually on each ISE node.
- C. NTP server settings can be configured centrally on the Cisco ISE, but the system time must be configured individually on each ISE node.
- D. The system time and NTP server settings must be configured individually on each ISE node.

Correct Answer: D

Explanation

QUESTION 8

What is a required step when you deploy dynamic VLAN and ACL assignments?

- A. Configure the VLAN assignment.
- B. Configure the ACL assignment.
- C. Configure Cisco IOS Software 802.1X authenticator authorization.
- D. Configure the Cisco IOS Software switch for ACL assignment.

Correct Answer: C

Explanation

QUESTION 9

The NAC Agent uses which port and protocol to send discovery packets to an ISE Policy Service Node?

- A. tcp/8905
- B. udp/8905
- C. http/80
- D. https/443

Correct Answer: A

Explanation

Explanation/Reference:

http://www.cisco.com/c/en/us/td/docs/security/ise/2-0/installation_guide/b_ise_InstallationGuide20/Cisco_SNS_3400_Series_Appliance_Ports_Reference.html

QUESTION 10

Scenario:

Currently, many users are experiencing problems using their AnyConnect NAM supplicant to login to the network. The IT desktop support staff have already examined and verified the AnyConnect NAM configuration is correct.

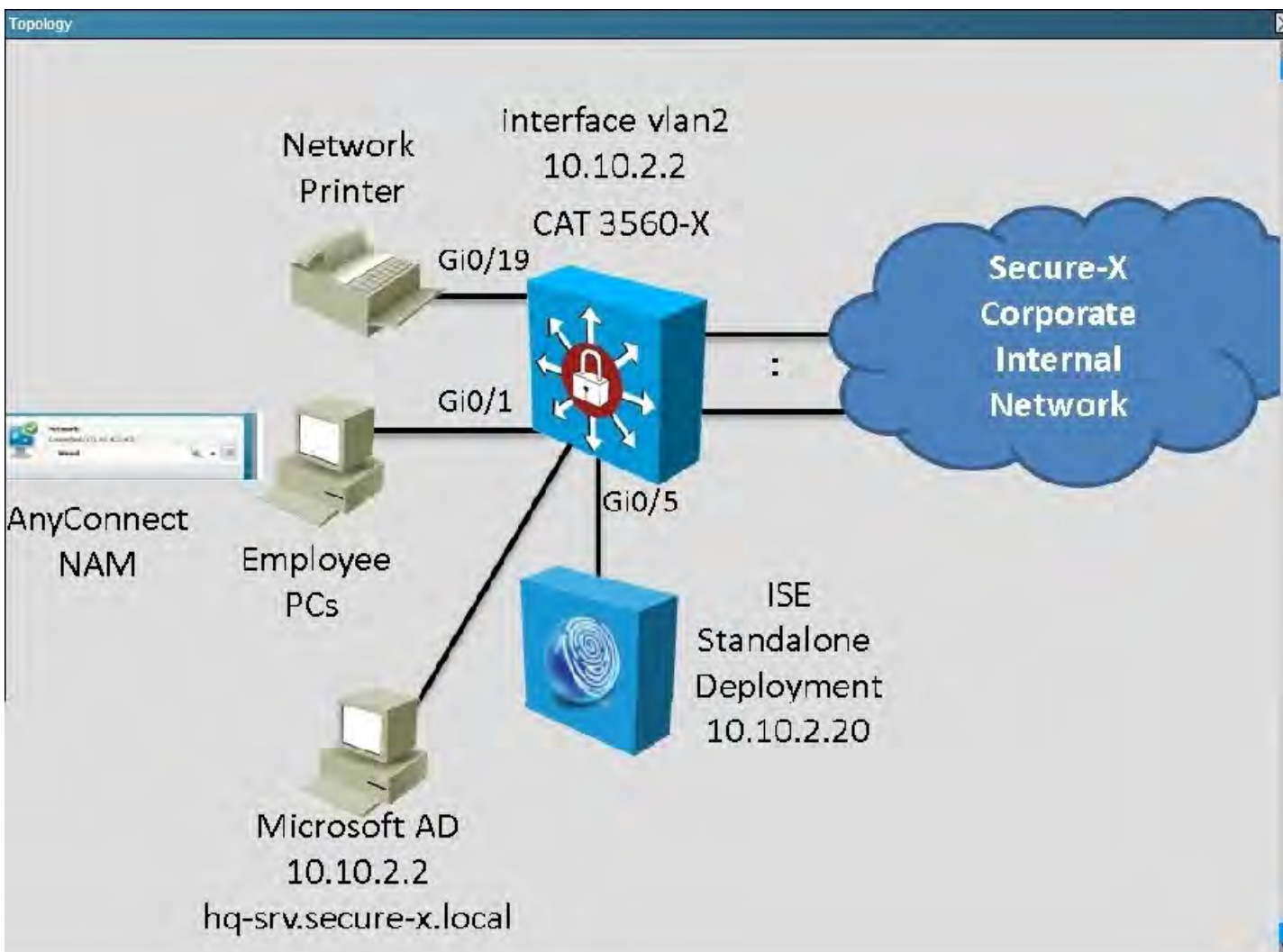
In this simulation, you are tasked to examine the various ISE GUI screens to determine the ISE current configurations to help isolate the problems. Based on the current ISE configurations, you will need to answer three multiple choice questions.

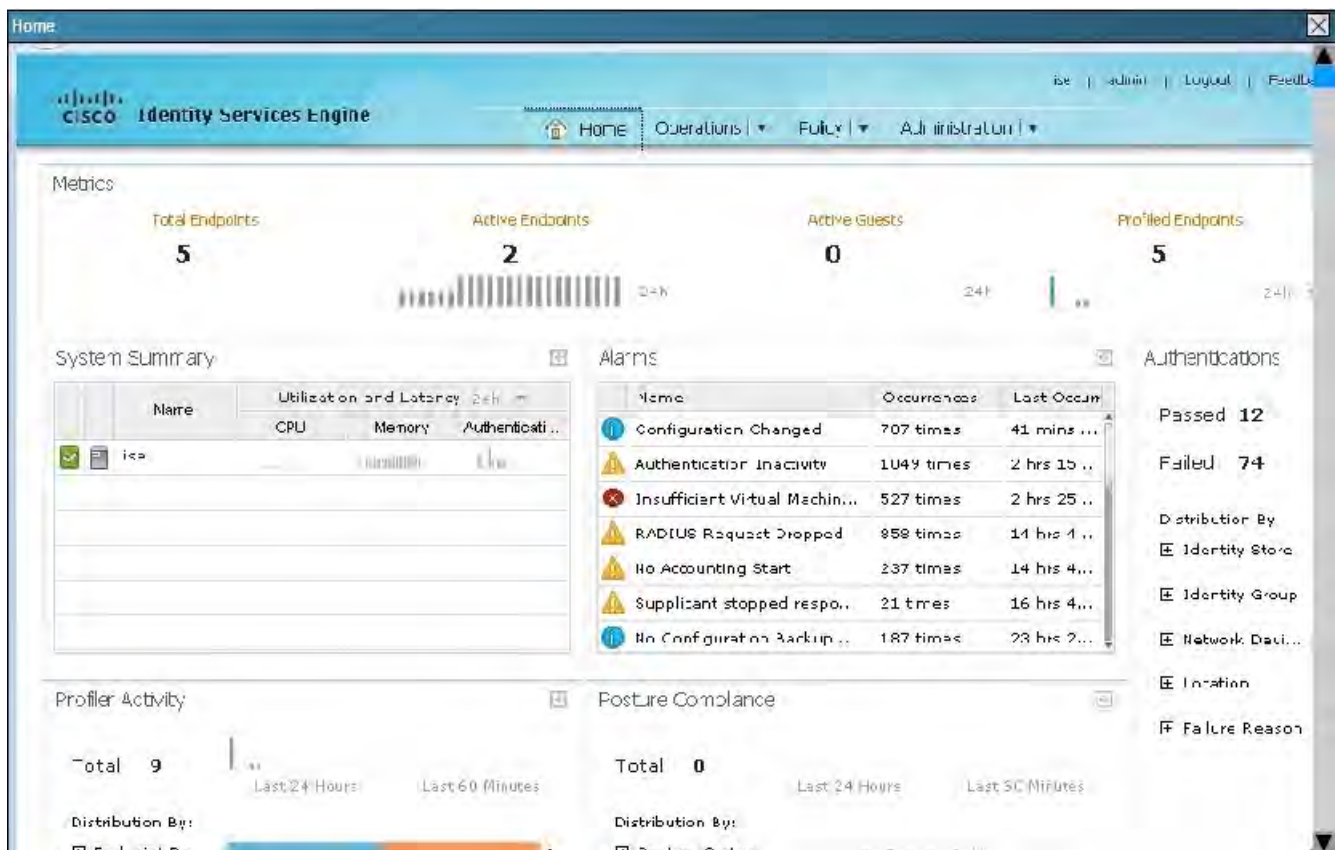
To access the ISE GUI, click on the ISE icon in the topology diagram to access the ISE GUI.

Not all the ISE GUI screens are operational in this simulation and some of the ISE GUI operations have been reduced in this simulation.

Not all the links on each of the ISE GUI screens work, if some of the links are not working on a screen, click Home to go back to the Home page first. From the Home page, you can access all the required screens.

To view some larger GUI screens, use the simulation window scroll bars. Some of the larger GUI screens only show partially but will include all information required to complete this simulation.





Determine which can be two reasons why many users like the Sales and FT users are not able to authenticate and access the network using their AnyConnect NAM client with EAP-FAST.(Choose two.)

- A. The Dot1X authentication policy is not allowing the EAP-FAST protocol.
- B. The rr_Corp authorization profile has the wrong Access Type configured.
- C. The authorization profile used for the Sales users is misconfigured.
- D. The order for the MAB authentication policy and the Dot1X authentication policy should be reversed.
- E. Many of the FT Sales and FT user machines are not passing the ISE posture assessment.
- F. The PERMr_ALL_TRAFFIC DACL is missing the permit ip any any statement at the end.
- G. The Employee_FullAccess_DACL DACL is missing the permit ip any any statement at the end.

Correct Answer: AD

Explanation

Explanation/Reference:

QUESTION 11

You configured wired 802.1X with EAP-TLS on Windows machines. The ISE authentication detail report shows "EAP-TLS failed SSL/TLS handshake because of an unknown CA in the client certificates chain." What is the most likely cause of this error?

- A. The ISE certificate store is missing a CA certificate.
- B. The Wireless LAN Controller is missing a CA certificate.
- C. The switch is missing a CA certificate.
- D. The Windows Active Directory server is missing a CA certificate.

Correct Answer: A

Explanation

QUESTION 12

A network administrator must enable which protocol extension to utilize EAP-Chaining?

- A. EAP-FAST
- B. EAP-TLS
- C. MSCHAPv2
- D. PEAP

Correct Answer: A

Explanation

QUESTION 13

Changes were made to the ISE server while troubleshooting, and now all wireless certificate authentications are failing. Logs indicate an EAP failure.

What are the two possible causes of the problem? (Choose two.)

- A. EAP-TLS is not checked in the Allowed Protocols list
- B. Client certificate is not included in the Trusted Certificate Store
- C. MS-CHAPv2-is not checked in the Allowed Protocols list
- D. Default rule denies all traffic
- E. Certificate authentication profile is not configured in the Identity Store

Correct Answer: AE

Explanation

Explanation/Reference:

QUESTION 14

A user reports that a switch's RADIUS accounting packets are not being seen on the Cisco ISE server. Which command is the user missing in the switch's configuration?

- A. radius-server vsa send accounting
- B. aaa accounting network default start-stop group radius
- C. aaa accounting resource default start-stop group radius
- D. aaa accounting exec default start-stop group radius

Correct Answer: A

Explanation

Explanation/Reference:

QUESTION 15

Which two statements about administrative access to the ACS Solution Engine are true? (Choose two.)

- A. The ACS Solution Engine supports command-line connections through a serial-port connection.
- B. For GUI access, an administrative GUI user must be created with the add-guiadmin command.
- C. The ACS Solution Engine supports command-line connections through an Ethernet interface.
- D. An ACL-based policy must be configured to allow administrative-user access.
- E. GUI access to the ACS Solution Engine is not supported.

Correct Answer: AB

Explanation

Explanation/Reference:

Explanation: who possess the proper administrative credentials. The CLI administrator does not have access to the ACS web GUI. To create an initial GUI administrator account that allows web access to the ACS SE GUI, use the add-guiadmin command to create a GUI account.
add-guiadmin :

Adds a GUI account that allows access to the SE using the ACS web GUI.

QUESTION 16

When you configure an endpoint profiling policy rule, which option describes the purpose of the minimum certainty factor?

- A. It is compared to the total certainty metric of an individual endpoint to determine whether the endpoint can be trusted.
- B. It is compared to the assigned certainty value of an individual endpoint in a device database to determine whether the endpoint can be trusted.
- C. It is used to compare the policy condition to other active policies.
- D. It is used to determine the likelihood that an endpoint is an active, trusted device on the network.

Correct Answer: A

Explanation

Explanation/Reference:

QUESTION 17

A user is on a wired connection and the posture status is noncompliant.

Which state will their EPS session be placed in?

- A. disconnected
- B. limited
- C. no access
- D. quarantined

Correct Answer: D

Explanation

QUESTION 18

Which RADIUS attribute is used primarily to differentiate an IEEE 802.1x request from a Cisco MAB request?

- A. RADIUS Attribute (5) NAS-Port
- B. RADIUS Attribute (6) Service-Type
- C. RADIUS Attribute (7) Framed-Protocol
- D. RADIUS Attribute (61) NAS-Port-Type

Correct Answer: B

Explanation

QUESTION 19

Refer to the exhibit.

TACACS Profile

Name * IOSShellprofile

Description

Task Attribute View Raw View

Common Tasks

<input checked="" type="checkbox"/> Default Privilege	9	(Select 0 to 15)
<input checked="" type="checkbox"/> Maximum Privilege	10	(Select 0 to 15)
<input type="checkbox"/> Access Control List		
<input type="checkbox"/> Auto Command		
<input type="checkbox"/> No Escape		(Select true or false)
<input type="checkbox"/> Timeout		(0-9999)
<input type="checkbox"/> Idle Time		(0-9999)

If the user matches the given TACACS+ profile on Cisco ISE, which command can the user enter from shell prompt on a Cisco switch?

- A. enable
- B. enable 10
- C. show run
- D. configure terminal

Correct Answer: B
Explanation

Explanation/Reference:

QUESTION 20

In a multi-node ISE deployment, backups are not working on the MnT node. Which ISE CLI option would help mitigate this issue?

- A. repository
- B. ftp-url
- C. application-bundle
- D. collector

Correct Answer: A
Explanation

Explanation/Reference:

QUESTION 21

Which redirect-URL is pushed by Cisco ISE for posture redirect for corporate users?

- A. <https://ise1.cisco.com:8443/portal/gateway?sessionId=0A00023D0000003A239F78CC&portal=283258a0-e96e-11e4-a30a-005056bf01c9&action=cpp&token=a1a6ea71ea8f410c2637e11ba534379e>
- B. <https://ise1.cisco.com:8443/portal/gateway?sessionId=0A00023D0000003A239F78CC&portal=283258a0-e96e-11e4-a30a-005056bf01c9&action=cwa&token=a1a6ea71ea8f410c2637e11ba534379e>

- C. <https://ise1.cisco.com:8443/portal/gateway?sessionId=0A00023D0000003A239F78CC&portal=283258a0-e96e-11e4-a30a-005056bf01c9&action=mdm&token=a1a6ea71ea8f410c2637e11ba534379e>
- D. <https://ise1.cisco.com:8443/portal/gateway?sessionId=0A00023D0000003A239F78CC&portal=283258a0-e96e-11e4-a30a-005056bf01c9&action=drw&token=a1a6ea71ea8f410c2637e11ba534379e>

Correct Answer: A

Explanation

QUESTION 22

Which command is useful when troubleshooting AAA Authentication between a Cisco router and the AAA server?

- A. test aaa-server test cisco cisco123 all new-code
- B. test aaa group7 tacacs+ auth cisco123 new-code
- C. test aaa group tacacs+ cisco cisco123 new-code
- D. test aaa-server tacacs+ group7 cisco cisco123 new-code

Correct Answer: C

Explanation

Explanation/Reference:

QUESTION 23

What is the first step that occurs when provisioning a wired device in a BYOD scenario?

- A. The smart hub detects that the physically connected endpoint requires configuration and must use MAB to authenticate.
- B. The URL redirects to the Cisco ISE Guest Provisioning portal.
- C. Cisco ISE authenticates the user and deploys the SPW package.
- D. The device user attempts to access a network URL.

Correct Answer: A

Explanation

QUESTION 24

Which two options must be used on Cisco ISE to enable the TACACS+ feature? (Choose two.)

- A. TACACS External Servers
- B. TACACS+ Authentication Settings
- C. TACACS Server Sequence
- D. Enable Device Admin Service
- E. TACACS Command Sets
- F. TACACS Profiles
- G. Device Administration License

Correct Answer: DG

Explanation

QUESTION 25

Why does Cisco recommend assigning dynamic classification security group tag assignment at the access layer?

- A. Static security group assignments are more scalable.

To Read the [Whole Q&As](#), please purchase the [Complete Version](#) from [Our website](#).

Trying our product !



- ★ **100%** Guaranteed Success
- ★ **100%** Money Back Guarantee
- ★ **365 Days** Free Update
- ★ **Instant Download** After Purchase
- ★ **24x7** Customer Support
- ★ Average **99.9%** Success Rate
- ★ More than **69,000** Satisfied Customers Worldwide
- ★ Multi-Platform capabilities - **Windows, Mac, Android, iPhone, iPod, iPad, Kindle**

Need Help

Please provide as much detail as possible so we can best assist you.

To update a previously submitted ticket:



 One Year Free Update <p>Free update is available within One Year after your purchase. After One Year, you will get 50% discounts for updating. And we are proud to boast a 24/7 efficient Customer Support system via Email.</p>	 Money Back Guarantee <p>To ensure that you are spending on quality products, we provide 100% money back guarantee for 30 days from the date of purchase.</p>	 Security & Privacy <p>We respect customer privacy. We use McAfee's security service to provide you with utmost security for your personal information & peace of mind.</p>
---	---	--

[Guarantee & Policy](#) | [Privacy & Policy](#) | [Terms & Conditions](#)

Any charges made through this site will appear as Global Simulators Limited.

All trademarks are the property of their respective owners.

Copyright © 2004-2015, All Rights Reserved.