

100% Money Back
Guarantee

Vendor: Cisco

Exam Code: 300-360

Exam Name: Designing Cisco Wireless Enterprise
Networks

Version: Demo

DEMO

QUESTION 1

An engineer is tuning RRM parameters to improve client connectivity. Which channel band results in the best 802.11n client compatibility?

- A. UNII-2
- B. UNII-2e
- C. UNII-3
- D. UNII
- E. UNII-1

Correct Answer: E

QUESTION 2

An engineer is installing a wireless network in an industrial area with extreme temperatures and a significant amount of dust. Which enclosure should be used to protect the APs?

- A. ACU
- B. ADU
- C. NEMA
- D. WLSE

Correct Answer: C

QUESTION 3

What are two advantages of conducting an active survey versus a passive survey when verifying RF coverage? (Choose two.)

- A. verifies packet loss
- B. verifies roaming
- C. verifies SNR
- D. verifies signal level
- E. verifies interferers

Correct Answer: AB

QUESTION 4

An engineer is deploying an outdoor Mesh network. Which four major factors should be considered? (Choose four.)

- A. power
- B. buildings
- C. traffic lights
- D. satellite dishes
- E. line of sight
- F. network connectivity
- G. power lines
- H. mounting

Correct Answer: AEHF

QUESTION 5

A customer has deployed an N+N redundant wireless infrastructure. In this deployment the access points have been salt and peppered between controllers.

What configuration would be necessary to cut down on the use of mobility tunnels for voice clients?

- A. mobility anchor
- B. KIS based CAC
- C. media session snooping
- D. re-anchor roamed voice clients

Correct Answer: D

QUESTION 6

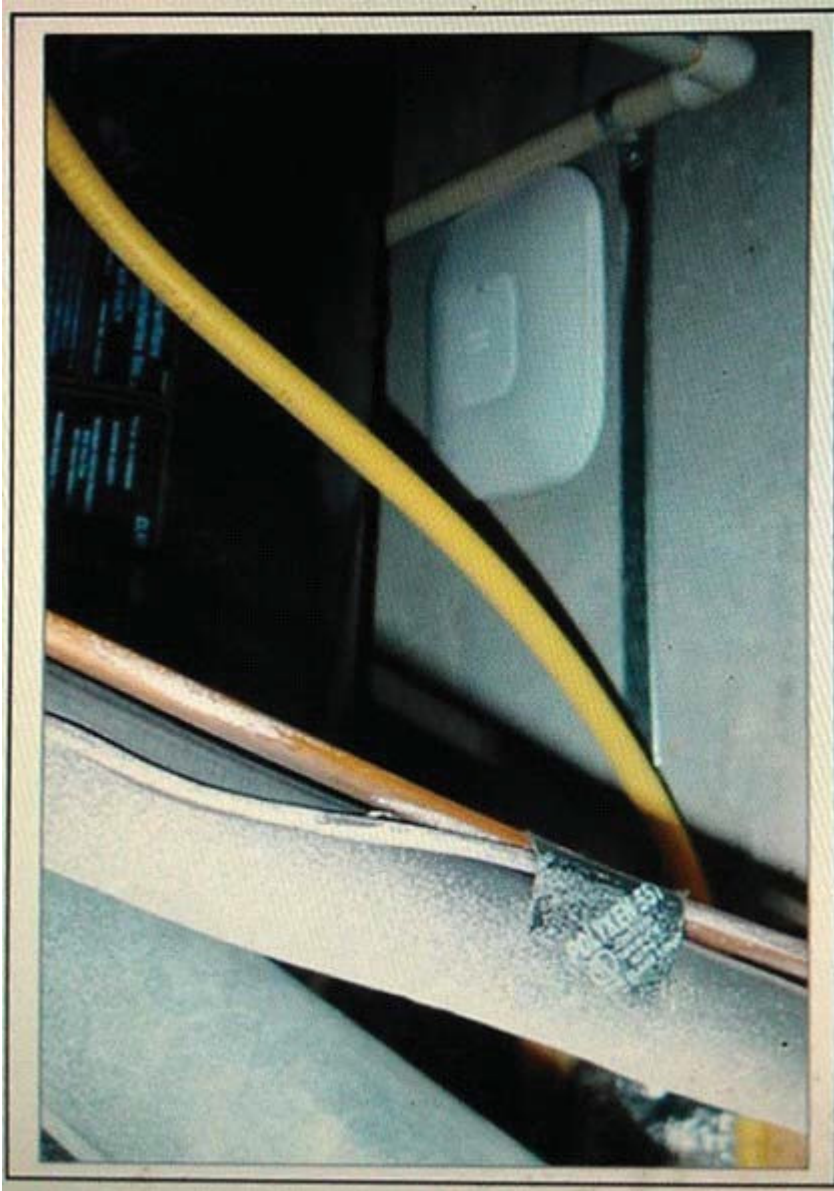
Which two steps are associated with the active portion of the audit when a post-installation audit is performed with an auditing tool such as Ekahau? (Choose two.)

- A. Check for co-channel interference by standing near an access point on one channel and watching for other access points that are on the same channel.
- B. Verify smooth roaming.
- C. Check to see if the signal level on other access points that are heard on the same channel is at least 19dBm weaker than the access point that you are next to.
- D. Check that all channels are supported by the APs regardless of client capabilities.
- E. Verify that the network traffic of physical data rate and packet loss meets user requirements.

Correct Answer: BE

QUESTION 7

Refer to the exhibit.



While testing the post-deployment WLAN network you discover that an AP has been placed in a difficult area. The AP cannot be moved easily because of various requirements. The client performance of various Apple and Microsoft operating system-based products does not meet expectations.

Which two options can help mitigate the performance issue? (Choose two.)

- A. Add additional APs.
- B. Increase the AP power level to maximum.
- C. Rotate the AP 90 degrees to change antenna polarity.
- D. Replace the AP with an AP and external antenna.
- E. Change the AP location to one that is less RF hostile.

Correct Answer: AD

QUESTION 8

An engineer would like to calibrate the RF environment to improve accuracy.

Which wireless attribute is added to the four-level calculation by calibrating the floor?

- A. attenuation
- B. TX power

- C. multipath
- D. SNR

Correct Answer: A

QUESTION 9

An engineer is performing a predictive wireless design for a Parts Distribution Center which requires data and location services. Which three requirements are inputs to the design? (Choose three.)

- A. access points with directional antennas
- B. continuous -67 dBm coverage from one access point
- C. overlapping -75 dBm coverage from three access points
- D. overlapping -67 dBm coverage from two access points
- E. access points in IPS mode
- F. continuous -72 dBm coverage from one access point
- G. accesspointsincornersandalongperimeters

Correct Answer: BCG

QUESTION 10

A customer is deploying a Greenfield 802.11ac network on a floor that will support approximately 300 wireless devices.

Which setting needs to be changed on Prime Infrastructure Planning Tool in order to predict the amount of access points the customer needs to service the new floor?

- A. Data Coverage Support Margin
- B. Demand Settings
- C. Add AP Field
- D. 802.11n Protocol Support

Correct Answer: B

QUESTION 11

Which two options describe best practices that must be completed after a wireless installation is finished? (Choose two.)

- A. Make sure that there are no spaces between the devices on the rack that the Wireless Lan Controller is installed.
- B. Consult with the customer to ensure that the IT staff has a complete set of design and installation documents.
- C. Make sure the customer is aware that they should consider purchasing a support contract immediately after the installation is complete.
- D. Spend time with the customer to show them the controller GUI and inform them how they can reach the Cisco TAC if they have any problems.
- E. Test all the customer's wireless devices and applications to ensure they are working properly.

Correct Answer: BE

QUESTION 12

An engineer is preparing for an outdoor wireless survey to mesh connect a distant remote building to a connected building.

Which two types of antennas are appropriate for this application? (Choose two.)

- A. circular polarized
- B. patch
- C. dish

- D. Yagi
- E. omni

Correct Answer: CD

To Read the [Whole Q&As](#), please purchase the [Complete Version](#) from [Our website](#).

Trying our product !


- ★ **100%** Guaranteed Success
- ★ **100%** Money Back Guarantee
- ★ **365 Days** Free Update
- ★ **Instant Download** After Purchase
- ★ **24x7** Customer Support
- ★ Average **99.9%** Success Rate
- ★ More than **69,000** Satisfied Customers Worldwide
- ★ Multi-Platform capabilities - **Windows, Mac, Android, iPhone, iPod, iPad, Kindle**

Need Help

Please provide as much detail as possible so we can best assist you.

To update a previously submitted ticket:



 One Year Free Update <p>Free update is available within One Year after your purchase. After One Year, you will get 50% discounts for updating. And we are proud to boast a 24/7 efficient Customer Support system via Email.</p>	 Money Back Guarantee <p>To ensure that you are spending on quality products, we provide 100% money back guarantee for 30 days from the date of purchase.</p>	 Security & Privacy <p>We respect customer privacy. We use McAfee's security service to provide you with utmost security for your personal information & peace of mind.</p>
---	---	--

[Guarantee & Policy](#) | [Privacy & Policy](#) | [Terms & Conditions](#)

Any charges made through this site will appear as Global Simulators Limited.

All trademarks are the property of their respective owners.

Copyright © 2004-2015, All Rights Reserved.