

# 4A0-102<sup>Q&As</sup>

Alcatel-Lucent Border Gateway Protocol

## Pass Alcatel-Lucent 4A0-102 Exam with 100% Guarantee

Free Download Real Questions & Answers **PDF** and **VCE** file from:

<https://www.pass2lead.com/4a0-102.html>

100% Passing Guarantee  
100% Money Back Assurance

Following Questions and Answers are all new published by Alcatel-Lucent Official Exam Center

- ⚙️ **Instant Download** After Purchase
- ⚙️ **100% Money Back** Guarantee
- ⚙️ **365 Days** Free Update
- ⚙️ **800,000+** Satisfied Customers



**QUESTION 1**

A BGP session is in OpenConfirm state. Which of the following messages must be received to transition to Established state?

- A. Update
- B. Open
- C. Notification
- D. Keepalive

Correct Answer: D

---

**QUESTION 2**

Which of the following statements about an autonomous system is FALSE?

- A. An AS is a set of routers under a single technical administration.
- B. An AS efficiently advertises all IGP known routes to other ASs.
- C. An AS presents a consistent routing policy to other autonomous systems.
- D. An AS has a 2-byte or 4-byte AS number assigned.

Correct Answer: B

---

**QUESTION 3**

What are the well-known mandatory BGP attributes?

- A. Origin, Next Hop and Local Preference.
- B. Local preference, AS Path and Next Hop.
- C. Aggregator, Next Hop and AS Path.
- D. AS Path, Next Hop and Origin.

Correct Answer: D

---

**QUESTION 4**

Which of the following is TRUE if the local state of BGP is OpenConfirm?

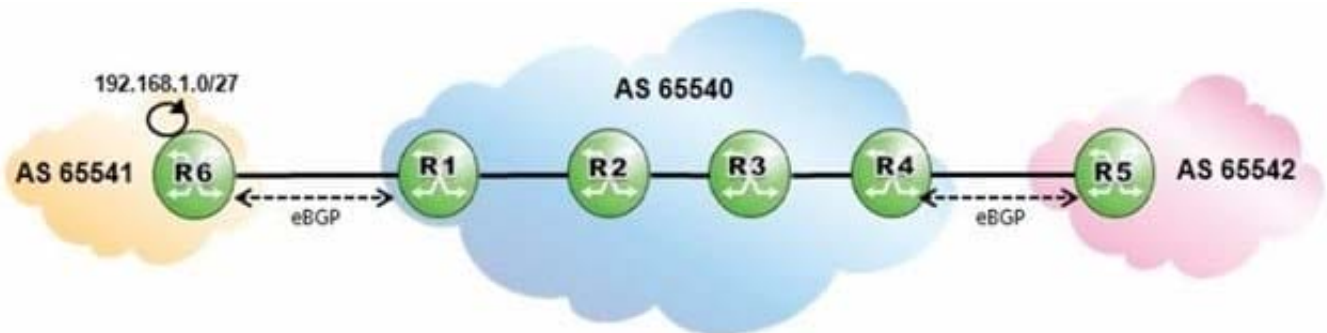
- A. The local system has received a Keepalive message and is ready to exchange updates.

- B. The local system is exchanging Update messages with its neighbor.
- C. The local system has sent a Keepalive message to its neighbor and is waiting to receive one back.
- D. The local system has sent an Open message to its neighbor and is waiting to receive one back.

Correct Answer: C

**QUESTION 5**

Click on the exhibit.



AS 65540 is using MPLS to provide BGP shortcuts for its iBGP routing. Which routers must be configured with the "configure router bgp igp-shortcuts rsvp-te" command?

- A. Routers R6, R1, R4 and R5.
- B. Routers R1 and R4.
- C. Routers R1, R2, R3 and R4.
- D. Routers R2 and R3.

Correct Answer: B

**QUESTION 6**

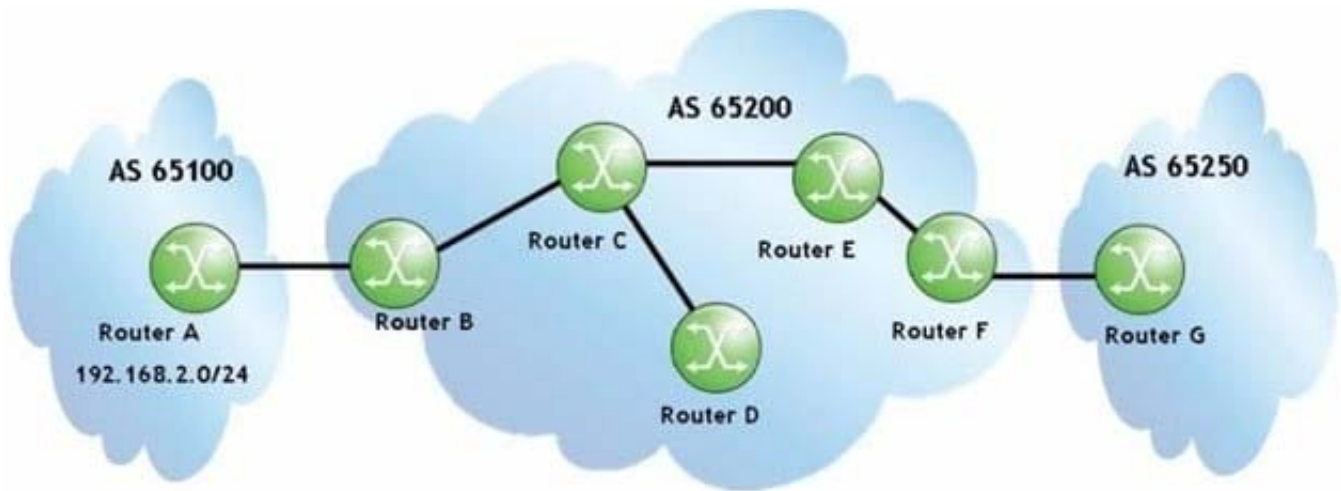
Which of the following regarding BGP authentication on the Alcatel-Lucent 7750 SR is FALSE?

- A. Authentication is performed before establishing the BGP session.
- B. Authentication can only be configured on the group or neighbor level.
- C. By default, MD5 authentication is disabled.
- D. Peer authentication may be optionally requested in an open message.

Correct Answer: B

**QUESTION 7**

Click the exhibit.



Routers C and E are route reflectors. When the update for prefix 192.168.2.0/24 is received at router F, what will be the Originator\_ID attribute?

- A. The router ID of router A.
- B. The router ID of router B.
- C. The router ID of router C.
- D. It will not be set.

Correct Answer: B

**QUESTION 8**

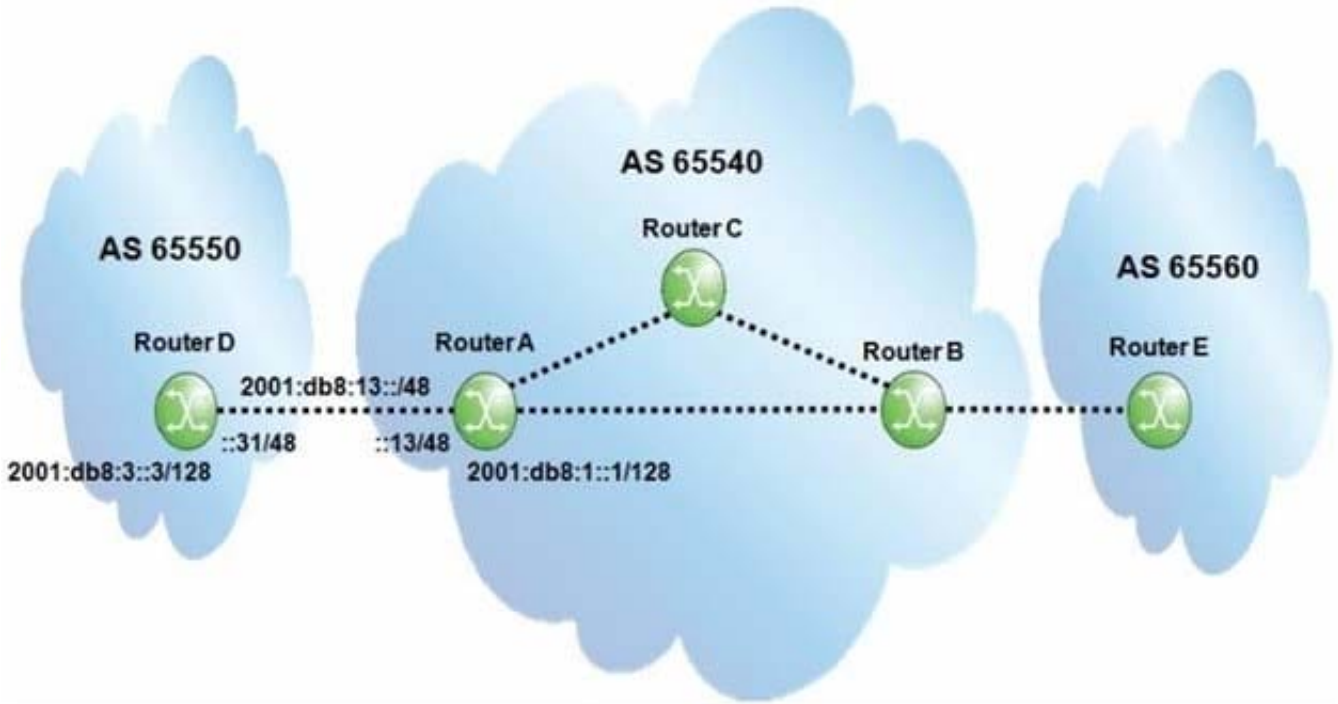
What class of attribute is Originator\_ID?

- A. Well-known mandatory.
- B. Well-known discretionary.
- C. Optional transitive.
- D. Optional non-transitive.

Correct Answer: D

**QUESTION 9**

Click the exhibit.



Assume all router-IDs are properly configured. Which of the following configurations is required on the Alcatel-Lucent 7750 SR router A to establish an IPv6 BGP session to router D?

- A. 

```
group "IPv6_eBGP"  
  family ipv6  
  type external  
  peer-as 65550  
  neighbor 2001:DB8:3::3  
  exit  
exit
```
- B. 

```
group "IPv6_eBGP"  
  type external  
  peer-as 65550  
  neighbor 2001:DB8:3::3  
  exit  
exit
```
- C. 

```
group "IPv6_eBGP"  
  family ipv6  
  peer-as 65550  
  neighbor 2001:DB8:13::31  
  exit  
exit
```
- D. 

```
group "IPv6_eBGP"  
  type external  
  peer-as 65550  
  neighbor 2001:DB8:13::31  
  exit  
exit
```

A. Option A

B. Option B

C. Option C

D. Option D

Correct Answer: C

---

**QUESTION 10**

Click the exhibit.

AS 65540 routers are iBGP fully-meshed. Prefixes advertised by router R2 have a local preference of 200. Router R1 advertises the prefix 192.168.1.0/27 to routers R2 and R3. Assuming that router R3 is configured with "advertise-external", what is the expected output of "show router bgp routes" when executed on router R4?

- A. Flag Network
- |                     | LocalPref | MED  |
|---------------------|-----------|------|
| u*>i 192.168.1.0/27 | 100       | None |
| 10.10.10.3          | None      | -    |
| 65541               |           |      |
| i 192.168.1.0/27    | 200       | None |
| 10.10.10.2          | None      | -    |
| 65541               |           |      |
- B. Flag Network
- |                     | LocalPref | MED  |
|---------------------|-----------|------|
| u*>i 192.168.1.0/27 | 200       | None |
| 10.10.10.2          | None      | -    |
| 65541               |           |      |
- C. Flag Network
- |                     | LocalPref | MED  |
|---------------------|-----------|------|
| u*>i 192.168.1.0/27 | 200       | None |
| 10.10.10.2          | None      | -    |
| 65541               |           |      |
| i 192.168.1.0/27    | 100       | None |
| 10.10.10.3          | None      | -    |
| 65541               |           |      |
- D. Flag Network
- |                     | LocalPref | MED  |
|---------------------|-----------|------|
| u*>i 192.168.1.0/27 | 200       | None |
| 10.1.2.3            | None      | -    |
| 65541               |           |      |
| i 192.168.1.0/27    | 200       | None |
| 10.10.10.2          | None      | -    |
| 65541               |           |      |
| i 192.168.1.0/27    | 100       | None |
| 10.10.10.3          | None      | -    |
| 65541               |           |      |

A. Option A

B. Option B



C. Option C

D. Option D

Correct Answer: C

**QUESTION 11**

Router R1, in AS 65540, has the export policy shown below. It advertises an aggregate route to eBGP peer router R2 in 65550. What is the AS Path of the aggregate route received by router R2?

```
*A:R1>config>router>policy-options# info
```

```
-----  
policy-statement "advertise aggregate"  
  entry 10  
    from  
      protocol aggregate  
    exit  
    action accept  
      as-path-prepend 65540 1  
    exit  
  exit  
exit
```

A. 65540

B. 65540 1

C. 65540 65540

D. 65550 65540

Correct Answer: C

**QUESTION 12**

A router in AS 65100 receives three routes for 138.120.0.0/16. The first route has an AS Path of 65200 65400 65300 and a local preference of 150. The second route has an AS Path of 65200 65300 and a local preference of 100. The third route has an AS Path of 65600 65300 and a local preference of 100. Which route will appear in the RIB-out?

A. Only the first route will appear in the RIB-Out.

B. Only the second route will appear in the RIB-Out.

C. Only the third route will appear in the RIB-Out.

D. All routes will appear in the RIB-Out.

Correct Answer: A

---

**QUESTION 13**

Which of the following best describes the purpose of advertise-external?

- A. It enables a BGP speaker to advertise multiple external routes to iBGP peers.
- B. It enables a BGP speaker to advertise its best external route to iBGP peers when the best overall route is internal.
- C. It enables a BGP speaker to advertise its best external route to eBGP peers without an import policy.
- D. It enables a BGP speaker to advertise its best internal route to eBGP peers without an export policy.

Correct Answer: B

---

**QUESTION 14**

From what range are 16-bit private AS numbers selected?

- A. 64496-64511
- B. 1-65535
- C. 64512-65534
- D. 64513-65535
- E. There are no defined private AS numbers; there are only private IP addresses.

Correct Answer: C

---

**QUESTION 15**

Which of the following is NOT a goal of BGP routing policies?

- A. To protect external networks from instability.
- B. To communicate the architecture of an AS to external ASs.
- C. To protect the local AS and other external ASs from bad NLRI.
- D. To optimize ingress and egress traffic patterns to best serve the users of the AS.

Correct Answer: B

[Latest 4A0-102 Dumps](#)

[4A0-102 Practice Test](#)

[4A0-102 Study Guide](#)