

OMG-OCUP-100^{Q&As}

OMG-Certified UML Professional Fundamental Exam

Pass OMG OMG-OCUP-100 Exam with 100% Guarantee

Free Download Real Questions & Answers **PDF** and **VCE** file from:

<https://www.pass2lead.com/omg-ocup-100.html>

100% Passing Guarantee
100% Money Back Assurance

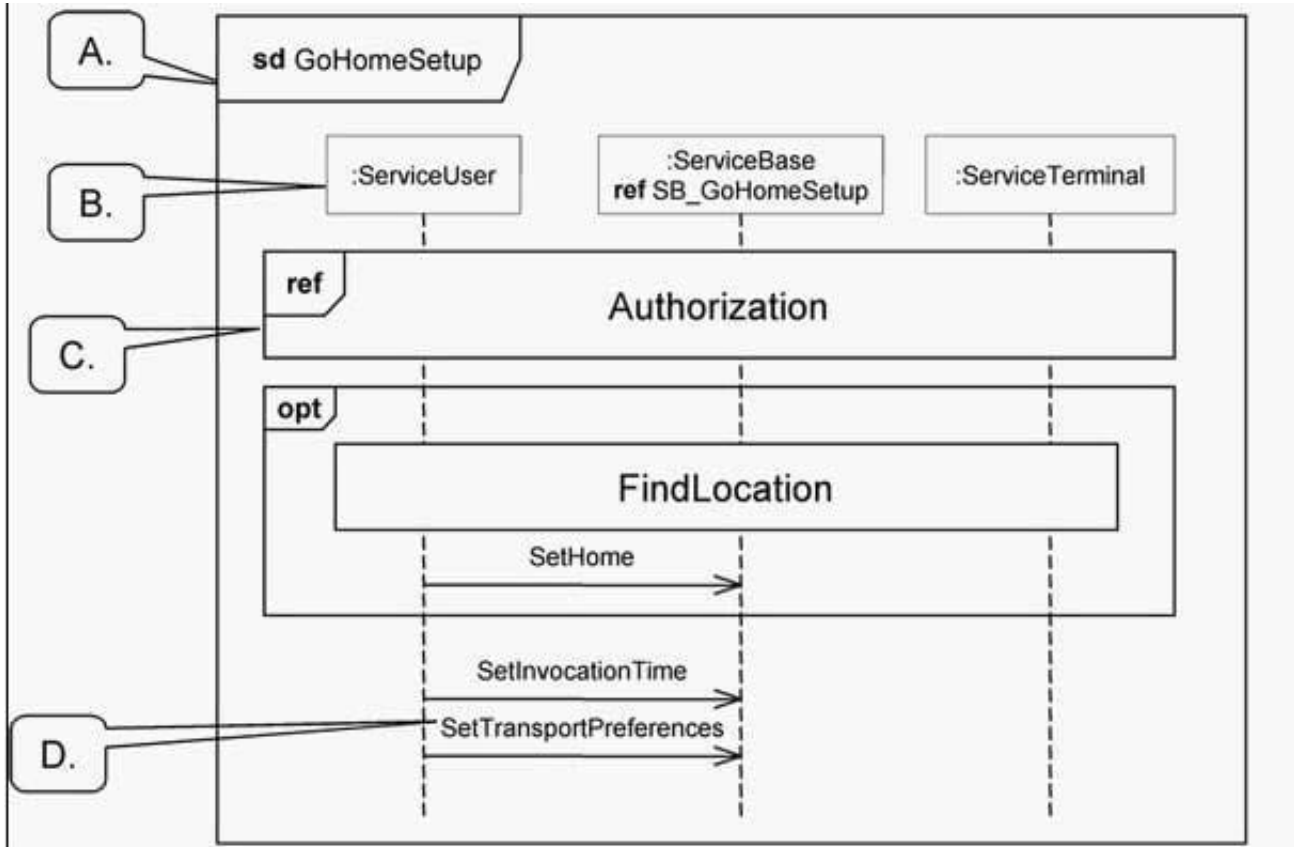
Following Questions and Answers are all new published by OMG
Official Exam Center

- ⚙️ **Instant Download** After Purchase
- ⚙️ **100% Money Back** Guarantee
- ⚙️ **365 Days** Free Update
- ⚙️ **800,000+** Satisfied Customers



QUESTION 1

In the exhibit, what is a lifeline?



A. Option A

B. Option B

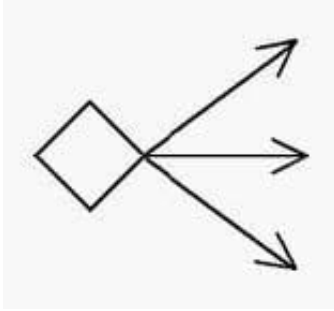
C. Option C

D. Option D

Correct Answer: B

QUESTION 2

How many of the three arrows outgoing from the diamond shape (as depicted in the exhibit) will be given values at one time in a well-defined activity diagram?

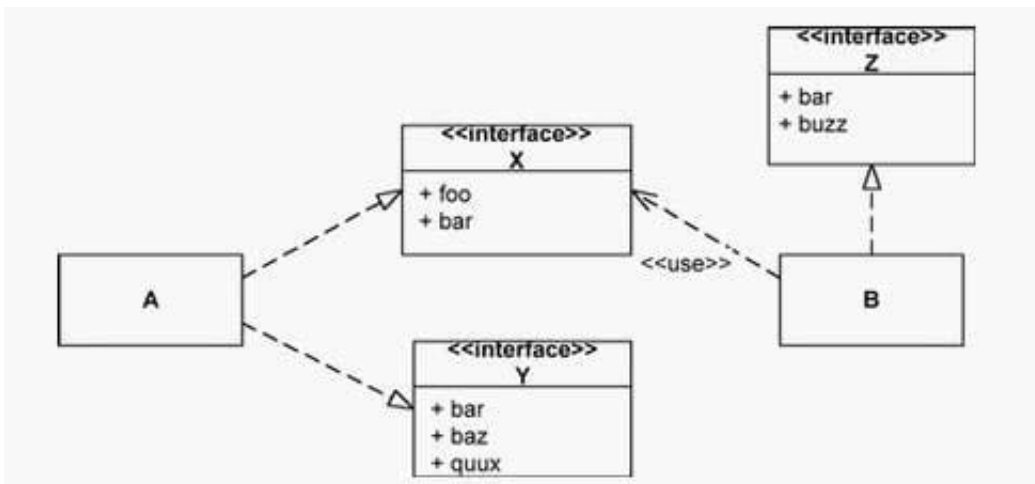


- A. none
- B. one
- C. two
- D. three

Correct Answer: B

QUESTION 3

Refer to the exhibit. n that class A realizes interfaces X and Y, and that class B realizes interface Y and uses interface Z, what operations must class A support?



- A. union of the operations in interfaces X and Y
- B. union of the operations in interfaces X, Y, and Z
- C. intersection of the operations in interfaces X and Y
- D. intersection of the operations in interfaces X, Y, and Z
- E. not required to support any operations specified by the interfaces shown

Correct Answer: A

QUESTION 4

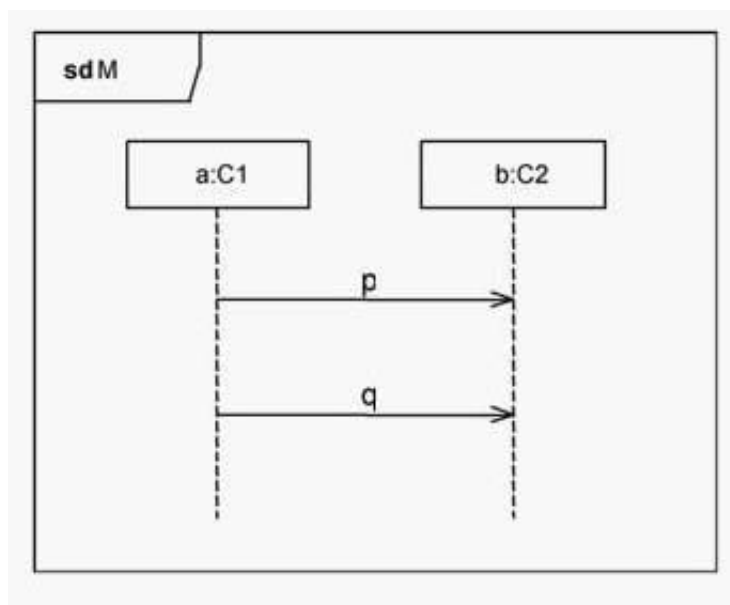
Which elements in an activity diagram can be redefined by which other elements? (Choose two)

- A. nodes by nodes
- B. nodes by edges
- C. edges by edges
- D. edges by nodes
- E. states by states
- F. transitions by transitions

Correct Answer: AC

QUESTION 5

In the exhibit, there is one element with the identifier b. is true about this element?



- A. b is a class.
- B. b is of the type C2.
- C. b is defined local to M.
- D. b is contained in class C2.
- E. b must be a property of a composite structure.

Correct Answer: B

QUESTION 6

What can be captured by use cases? (Choose two)

- A. requirements of the system
- B. behaviors offered by the system
- C. data and control flow of the system
- D. changes in state over time of the system
- E. user-interface specification of the system

Correct Answer: AB

QUESTION 7

What does multiplicity in UML 2.0 signify?

- A. interval of integers
- B. range of allowable cardinalities
- C. sequence and uniqueness of association
- D. ability to multiply two or more numbers
- E. upper bound for the number of allowable instances

Correct Answer: B

QUESTION 8

What does an activity contain? (Choose two)

- A. edges
- B. nodes
- C. states
- D. classes
- E. lifelines
- F. messages

Correct Answer: AB

QUESTION 9

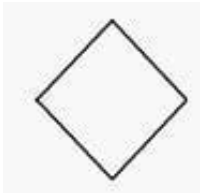
What are some of the important semantics of packages? (Choose three)

- A. A class may be owned by multiple packages.
- B. An element may be owned by at most one package.
- C. The public contents of a package are accessible outside the package.
- D. The public contents of a package are not accessible outside the package.
- E. If a package is removed from a model, the owned contents are removed.
- F. If a package is removed from a model, the owned contents are reassigned.

Correct Answer: BCE

QUESTION 10

What does a diamond shape (as depicted in the exhibit) represent in UML 2.0 activity diagrams? (Choose two)



- A. joins
- B. forks
- C. merges
- D. decisions
- E. initial nodes
- F. flow final nodes
- G. activity final nodes

Correct Answer: CD

QUESTION 11

What do shapes in activity diagrams with no labels inside represent?

- A. states
- B. actions
- C. activities

D. behaviors

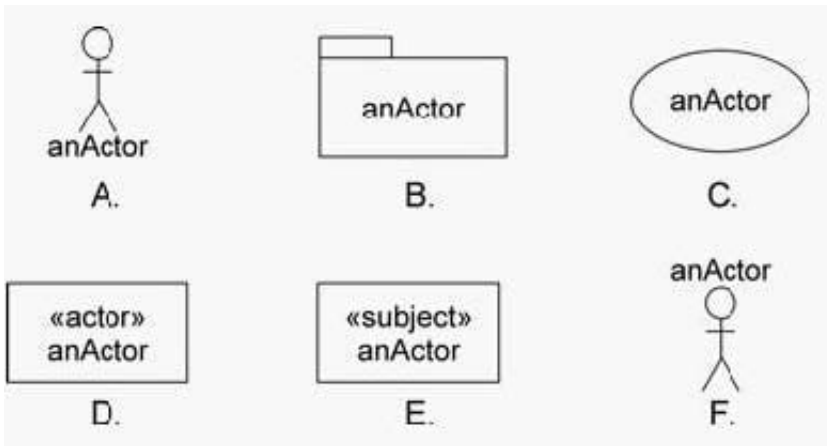
E. object nodes

F. control nodes

Correct Answer: F

QUESTION 12

Which icons are a standard representation for an actor? (Choose three) A. Option A



B. Option B

C. Option C

D. Option D

E. Option E

F. Option F

Correct Answer: ADF

QUESTION 13

What is a selector of a lifeline?

A. a scheduler that chooses the next lifeline on which to run

B. a specific lifeline that selects a resource from a resource pool

C. a construct to select one lifeline out of all the lifelines in the diagram

D. an expression selecting one out of a set; a general indexing mechanism

Correct Answer: D

QUESTION 14

How many diamond shapes can appear in a well-defined activity diagram?

- A. exactly two
- B. any number
- C. an odd number
- D. an even number

Correct Answer: B

QUESTION 15

What is true about constraints in UML 2.0? (oose two)

- A. can be named
- B. cannot be named
- C. must be true to be satisfied
- D. can be applied to themselves
- E. can result in any number of possibilities

Correct Answer: AC

[OMG-OCUP-100 Practice Test](#)

[OMG-OCUP-100 Study Guide](#)

[OMG-OCUP-100 Braindumps](#)