

# AZ-801<sup>Q&As</sup>

Configuring Windows Server Hybrid Advanced Services

## Pass Microsoft AZ-801 Exam with 100% Guarantee

Free Download Real Questions & Answers **PDF** and **VCE** file from:

<https://www.pass2lead.com/az-801.html>

100% Passing Guarantee  
100% Money Back Assurance

Following Questions and Answers are all new published by Microsoft  
Official Exam Center

-  **Instant Download** After Purchase
-  **100% Money Back** Guarantee
-  **365 Days** Free Update
-  **800,000+** Satisfied Customers



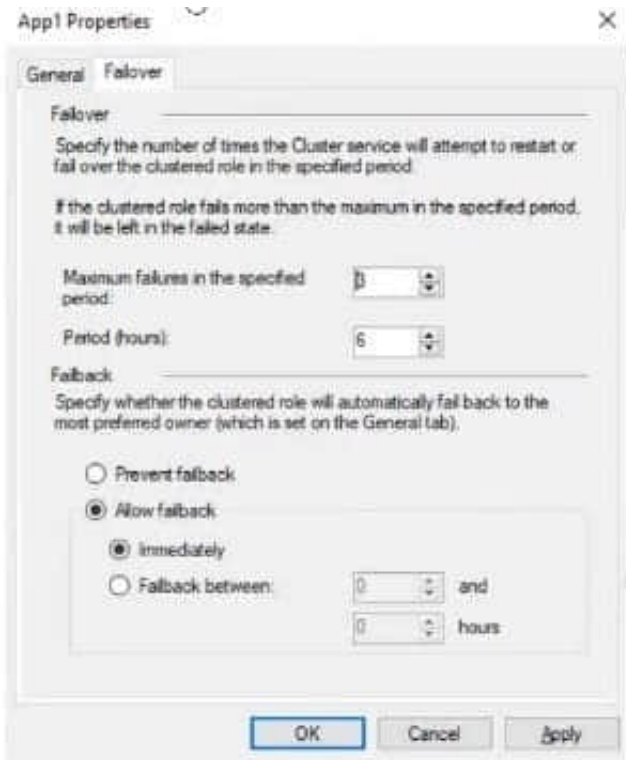
**QUESTION 1**

You have a failover cluster named Cluster1 that hosts an application named App1.

The General tab in App1 Properties is shown in the General exhibit. (Click the General tab.)



The Failover tab in App1 Properties is shown in the Failover exhibit. (Click the Failover tab.)



Server1 shuts down unexpectedly.

You need to ensure that when you start Server1, App1 continues to run on Server2.

Solution: From the Failover settings, you select Prevent failback.

Does this meet the goal?

A. Yes

B. No

Correct Answer: A

The Prevent failback setting will prevent the cluster failing back to Server1.

## QUESTION 2

### DRAG DROP

Your network contains an Active Directory Domain Services (AD DS) domain. The domain contains a print server named Server1. All printers are deployed to users by using a Group Policy Object (GPO) named GPO1.

You deploy a new server named Server2.

You need to decommission Server1. The solution must meet the following requirements:

Migrate the shared printers to Server2 by using the Printer Migration Wizard.

Ensure that the users use the printers on Server2.

Minimize downtime for the users.

Which four actions should you perform in sequence? To answer, move the appropriate actions from the list of actions to the answer area and arrange them in the correct order.

Select and Place:

Actions	Answer Area
Decommission Server1.	
Import the printers on Server2.	
Deploy Windows Server Hybrid Cloud Print.	
Export the printers on Server1.	
Update the service principal name (SPN) of each printer.	
Modify GPO1.	

Correct Answer:

Actions	Answer Area
	Export the printers on Server1.
	Import the printers on Server2.
Deploy Windows Server Hybrid Cloud Print.	Modify GPO1.
Update the service principal name (SPN) of each printer.	Decommission Server1.

### QUESTION 3

DRAG DROP

Your network contains an Active Directory Domain Services (AD DS) domain that has the Active Directory Recycle Bin enabled. All domain controllers are backed up daily.

You accidentally remove all the users from a domain group.

You need to get a list of the users that were previously in the group.

Which four actions should you perform in sequence from a domain controller? To answer, move the appropriate actions from the list of actions to the answer area and arrange them in the correct order.

Select and Place:

**Action**

- Mount Active Directory to port 51389.
- View the membership of the group.
- Restore the system state to an alternate location.
- From the Deleted Objects container in Active Directory Administrative Center, run the Restore task.
- From Active Directory Users and Computers, change the domain controller to localhost:51389.
- Restore the group from the Active Directory Recycle Bin.

**Answer Area**

Correct Answer:

**Action**

- 
- 
- 
- From the Deleted Objects container in Active Directory Administrative Center, run the Restore task.
- 
- Restore the group from the Active Directory Recycle Bin.

**Answer Area**

- Restore the system state to an alternate location.
- Mount Active Directory to port 51389.
- From Active Directory Users and Computers, change the domain controller to localhost:51389.
- View the membership of the group.

**QUESTION 4**

You have a server named Server1 that runs Windows Server.

You need to ensure that only specific applications can modify the data in protected folders on Server1.

Solution: From Virus and threat protection, you configure Tamper Protection.

Does this meet the goal?

- A. Yes
- B. No

Correct Answer: B

Reference:

<https://docs.microsoft.com/en-us/microsoft-365/security/defender-endpoint/customize-controlled-folders?view=o365-worldwide>

**QUESTION 5**

**HOTSPOT**

Your network contains an Active Directory Domain Services (AD DS) domain named contoso.com. The domain contains the organizational units (OUs) shown in the following table.

Name	Contents
Domain Controllers	All the domain controllers in the domain
Domain Servers	All the servers that run Windows Server in the domain
Domain Client Computers	All the client computers that run Windows 10 in the domain
Domain Users	All the users in the domain

In the domain, you create the Group Policy Objects (GPOs) shown in the following table.

Name	IPsec setting
GPO1	Require authentication by using Kerberos V5 for inbound connections
GPO2	Request authentication by using Kerberos V5 for inbound connections
GPO3	Require authentication by using X.509 certificates for inbound connections
GPO4	Request authentication by using X.509 certificates for inbound connections

You need to implement IPsec authentication to ensure that only authenticated computer accounts can connect to the members in the domain. The solution must minimize administrative effort.

Which GPOs should you apply to the Domain Controllers OU and the Domain Servers OU? To answer, select the appropriate options in the answer area.

NOTE: Each correct selection is worth one point.

Hot Area:

Domain Controllers:

	▼
GPO1	
GPO2	
GPO3	
GPO4	

Domain Servers:

	▼
GPO1	
GPO2	
GPO3	
GPO4	

Correct Answer:

Domain Controllers:

	▼
GPO1	
GPO2	
GPO3	
GPO4	

Domain Servers:

	▼
GPO1	
GPO2	
GPO3	
GPO4	

**QUESTION 6**

Your on-premises network contains two subnets. The subnets contain servers that run Windows Server as shown in the following table.



Name	IP address
Server1	192.168.1.10
Server2	192.168.0.250
Server3	192.168.0.240
Server4	192.168.0.10

Server4 has the following IP configurations:

Ethernet adapter Ethernet:

Connection-specific DNS Suffix . . . :

IPv4 Address . . . . . : 192.168.0.10

Subnet Mask . . . . . : 255.255.255.0

Default Gateway . . . . . : 192.168.0.1

From Server4, you can ping Server1 and Server2 successfully. When you ping Server3, you get a Request timed out response.

From Server2, you can ping Server1 and Server3 successfully.

The misconfiguration of which component on Server3 can cause the Request timed out response?

- A. default gateway
- B. IP address
- C. subnet mask
- D. DNS server

Correct Answer: C

**QUESTION 7**

You have an on-premises server named Served that runs Windows Server. You have an Azure subscription. You plan to back up the files and folders on Server1 to Azure by using Azure Backup. You need to define how long the backups will be retained. What should you use to configure the retention?

- A. Backup center
- B. Windows Server Backup
- C. the Microsoft Azure Recovery Services (MARS) agent
- D. a Recovery Services vault

Correct Answer: B

**QUESTION 8**

You have an Azure virtual machine named VM1. Crash dumps for a process named Process1 are enabled for VM1.

When process1.exe on VM1 crashes, a technician must access the memory dump files on the virtual machine. The technician must be prevented from accessing the virtual machine.

To what should you provide the technician access?

- A. an Azure file share
- B. an Azure Log Analytics workspace
- C. an Azure Blob Storage container
- D. a managed disk

Correct Answer: C

Reference: <https://docs.microsoft.com/en-us/azure/azure-monitor/agents/diagnostics-extension-overview>

---

## QUESTION 9

### HOTSPOT

You have a server that runs Windows Server and has the Web Server (IIS) server role installed. Server1 hosts a single website that has the following configurations:

Is accessible by using a URL of <https://www.contoso.com:8443> and has an SSL certificate that was issued by a third-party certification authority (CA) in the Microsoft Trusted Root Program

Uses anonymous authentication

Was developed by using PHP

You plan to use APP Service Migration Assistant to migrate the website to Azure App Service.

You need to migrate the website. The solution must minimize the number of changes made to the existing website.

What should you do manually to ensure that the website migration is successful? To answer, select the appropriate options in the answer area.

NOTE: Each correct selection is worth one point.

Hot Area:

**Answer Area**

On Server1:

- Change the authentication method.
- Change the listening port of the website.
- Redevelop the website code by using ASP.NET.

In Azure:

- Create an App Service plan.
- Copy the source files of the website.
- Configure a certificate and a custom domain name.

Correct Answer:

**Answer Area**

On Server1:

- Change the authentication method.
- Change the listening port of the website.
- Redevelop the website code by using ASP.NET.

In Azure:

- Create an App Service plan.
- Copy the source files of the website.
- Configure a certificate and a custom domain name.

**QUESTION 10**

You have a Storage Spaces Direct configuration that has persistent memory and contains the data volumes shown in the following table.

Name	File system
Volume1	NTFS
Volume2	ReFS

You plan to add data volumes to Storage Spaces Direct as shown in the following table.

Name	File system
Volume3	NTFS
Volume4	ReFS

On which volumes can you use direct access (DAX)?

- A. Volume3 only
- B. Volume4 only
- C. Volume1 and Volume3 only
- D. Volume2 and Volume4 only
- E. Volume3 and Volume4 only

Correct Answer: A

DAX can only be used on one volume and the volume has to be NTFS. You could configure DAX on Volume1 (although that would require reformatting the volume) or Volume3. However, `Volume1 only` isn't an answer option so Volume3 is

the correct answer.

`Volume1 and Volume3` is incorrect because of the single volume limitation.

Reference:

<https://docs.microsoft.com/en-us/windows-server/storage/storage-spaces/persistent-memory-direct-access>

### QUESTION 11

You are evaluating the technical requirements for Cluster2.

What is the minimum number of Azure Site Recovery Providers that you should install?

- A. 1
- B. 4
- C. 12
- D. 16

Correct Answer: B

### QUESTION 12

Your company uses Storage Spaces Direct.

You need to view the available storage in a Storage Space Direct storage pool.

What should you use?

- A. System Configuration
- B. File Server Resource Manager (FSRM)
- C. the Get-StorageFileServer cmdlet
- D. Failover Cluster Manager

Correct Answer: D

If Failover Cluster Manager, select the Storage Space Direct storage pool. The information displayed in the main window includes the free space and used space.

---

### QUESTION 13

You deploy Azure Migrate to an on-premises network.

You have an on-premises physical server named Server1 that runs Windows Server and has the following configuration.

\*

Operating system disk 600 GB

\*

Data disc 3 TB

\*

NIC Teaming: Enabled

\*

Mobility service: installed

\*

Windows Firewall: Enabled

\*

Microsoft Defender Antivirus: Enabled

You need to ensure that you can use Azure Migrate to migrate Server1.

Solution: You shrink the data disk on Server1.

Does this meet the goal?

- A. Yes

B. No

Correct Answer: B

---

**QUESTION 14**

You are planning the migration of Archive1 to support the on-premises migration plan.

What is the minimum number of IP addresses required for the node and cluster roles on Cluster3?

A. 2

B. 3

C. 4

D. 5

Correct Answer: B

Explanation:

One IP for each of the two nodes in the cluster and one IP for the cluster virtual IP (VIP).

---

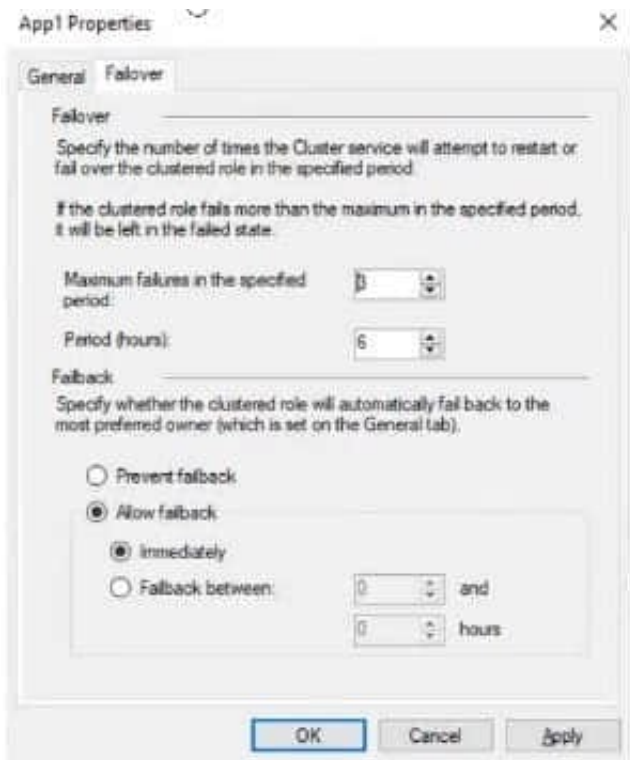
**QUESTION 15**

You have a failover cluster named Cluster1 that hosts an application named App1.

The General tab in App1 Properties is shown in the General exhibit. (Click the General tab.)



The Failover tab in App1 Properties is shown in the Failover exhibit. (Click the Failover tab.)



Server1 shuts down unexpectedly.

You need to ensure that when you start Server1, App1 continues to run on Server2.

Solution: From the General settings, you move Server2 up.

Does this meet the goal?

A. Yes

B. No

Correct Answer: B

Server1 and Server2 are both unticked so the order they are listed in has no effect on whether the cluster will fail back.

[AZ-801 VCE Dumps](#)

[AZ-801 Study Guide](#)

[AZ-801 Braindumps](#)