

HP2-Z34^{Q&As}

Building HP FlexFabric Data Centers

Pass HP HP2-Z34 Exam with 100% Guarantee

Free Download Real Questions & Answers **PDF** and **VCE** file from:

<https://www.pass2lead.com/hp2-z34.html>

100% Passing Guarantee
100% Money Back Assurance

Following Questions and Answers are all new published by HP Official Exam Center

- ⚙️ **Instant Download** After Purchase
- ⚙️ **100% Money Back** Guarantee
- ⚙️ **365 Days** Free Update
- ⚙️ **800,000+** Satisfied Customers



QUESTION 1

An HP Comware switch supports FCoE in Fibre Channel Forwarder (FCF) mode. A switch interface Ten1/0/1 connects to a server FCoE Converged Network Adapter (CNA). The CNA will carry normal data traffic and storage traffic for VSAN 2, which is associated with VLAN 20. How does the administrator assign FCoE traffic for this CNA to VSAN 2?

- A. by accessing the VSAN 2 configuration view and specifying Ten1/0/1 as a member port of the VSAN
- B. by accessing the VLAN 20 configuration view and specifying Ten1/0/1 as a member port of the VLAN
- C. by setting Ten1/0/1 to FCoE mode and specifying VSAN 2 as the port access VSAN
- D. by binding a VFC interface to Ten 1/0/1 and specifying VSAN 2 as the VFC interface trunk VSAN

Correct Answer: A

QUESTION 2

To support FCoE traffic, a switch port needs to use Application TLVs to communicate application priority information to a Converged Network Adapter (CNA). The setup process includes the configuration of an Access Control List (ACL). What is a valid ACL?

- A. Advanced ACL that selects traffic by UDP source port
- B. Advanced ACL that selects traffic by TCP source port
- C. Standard ACL that selects traffic by source IP address
- D. Ethernet ACL that selects traffic by Ether type

Correct Answer: B

QUESTION 3

HP Comware Switch 1 connects to servers with Converged Network Adapters (CNAs) that send data and FCoE storage traffic. Switch 1 should forward all FCoE traffic to an upstream FCoE switch. Switch 2, which will handle all the FLOGI requests, zoning, and FC traffic forwarding.

What is the correct FCoE mode setting for Switch 1?

- A. NPV
- B. FCF
- C. disabled
- D. hybrid

Correct Answer: B

QUESTION 4

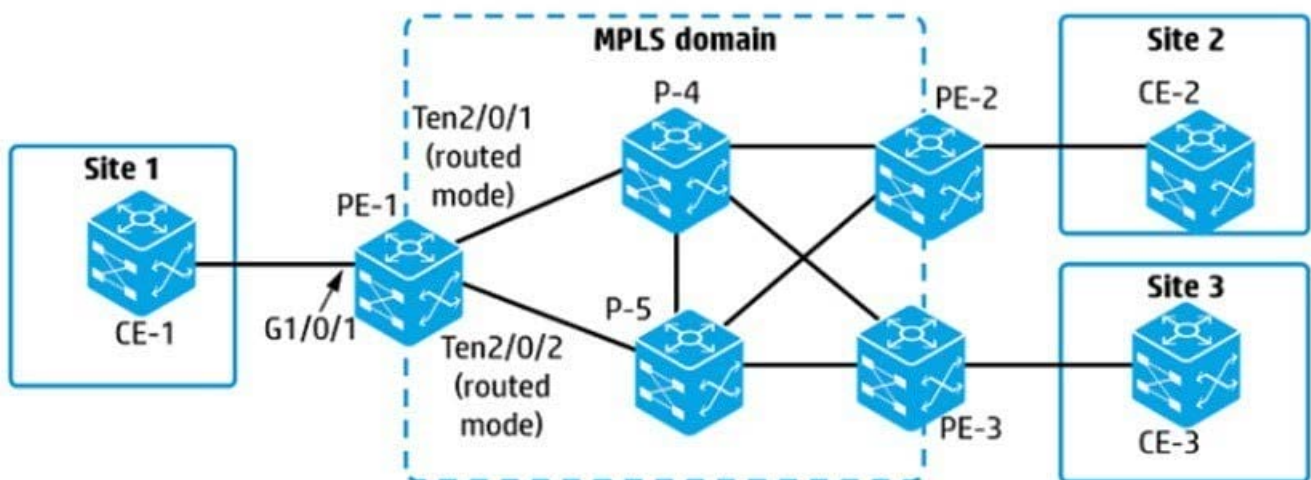
An HP Comware switch port is being connected to a server Converged Network Adaptor (CNA). The CNA and the switch port need to communicate about parameters for various priority flow control (PFC) and bandwidth control mechanisms. How does the administrator enable these communications?

- A. Enable PFC globally and then enable PFC on the switch port
- B. Enable the Fibre Channel (FC) fabric port function on the switch port and then set the port as an F-port.
- C. Enable Ethernet Virtual Bridging (EVB) on the switch port.
- D. Enable LLDP globally and then enable Data Center Bridging eXchange (DCBX) TLVs on the switch port

Correct Answer: D

QUESTION 5

Refer to the exhibit



An administrator is configuring an MPLS VPLS Martini solution on PE-1. The VPLS solution should connect customer A sites 1, 2, and 3. Where should the administrator specify the LDP peers and pseudo wire (PW) label for the PWs?

- A. in service instances on interfaces Ten2/0/1 and Ten2/0/2
- B. in a Virtual Switch Instance (VSI) for customer A
- C. in a service instance on interface G1/0/1
- D. in a global cross-connect group

Correct Answer: A

QUESTION 6

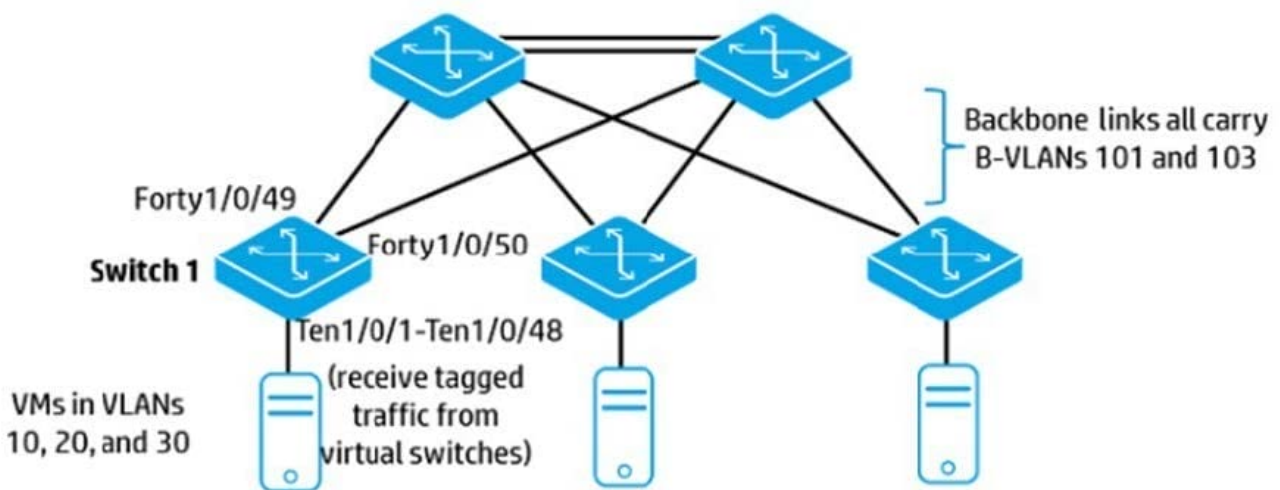
An administrator configures an HP Comware switch to support FCoE in Fibre Channel Forwarder (FCF) mode A switch interface connects to a server FC host bus adapter (HBA). What is the correct configuration for this port?

- A. bound to a VFC interface, which is in F mode
- B. bound to a VFC interface, which is in E mode
- C. FC port >n F mode
- D. FC port in NP mode

Correct Answer: B

QUESTION 7

Refer to the exhibit An administrator is setting up this data center topology to use SPBM VMs in the same subnet should be able to communicate at Layer 2 and be isolated at Layer 2 from other subnets. On which Switch 1 interfaces should the administrator enable SPBM?



- A. interfaces Ten1/0/1-Ten1/0/48 and interfaces Forty1/0/49-1/0/50
- B. interfaces Forty 1/0/49-1/0/50 only
- C. VLAN interfaces 101 and 103
- D. VLAN interfaces 10, 20, and 30

Correct Answer: C

QUESTION 8

Why might a customer decide to use MDC instead of Multi-VPN-Instance CE (MCE)?

- A. to isolate tenants while maintaining the ability to leak routes in and out of a tenant instance
- B. to integrate with Intelligent Resilient Framework (IRF)

- C. to manage all routing and switch functions with a single management team
- D. to provide further segmentation between tenants at the hardware or ASIC level

Correct Answer: A

QUESTION 9

An HP IRF virtual switch with two members is implementing SPBM. The administrator wants to ensure that the master can fail without causing topology changes or changes in forwarding tables in the SPBM region. Which setting helps support this requirement?

- A. tandem replication for multicasts
- B. persistent MAC address for IRF
- C. Bidirectional Forwarding Detection (BFD) Multi-Active Detection (MAD) for the IRF link
- D. non-stop-forwarding for SPBM

Correct Answer: C

QUESTION 10

An administrator creates two VPN instances on an HP Comware switch, in addition to the public instance. The switch implements routing protocols and MPLS. Which statement is correct about the routing tables and Label Forwarding Information Bases (LFIBs) maintained by the switch?

- A. The switch uses a single routing table and maintains a separate LFIB for each VPN instance
- B. The switch maintains a separate routing table and LFIB for each VPN instance, but the public tables automatically include entries from the other instances.
- C. The switch maintains a separate routing table and LFIB for each VPN instance.
- D. The switch maintains a separate routing table for each VPN instance and uses a single LFIB

Correct Answer: D

[Latest HP2-Z34 Dumps](#)

[HP2-Z34 VCE Dumps](#)

[HP2-Z34 Study Guide](#)