

# HPE6-A68<sup>Q&As</sup>

Aruba Certified ClearPass Professional (ACCP) V6.7

## Pass HP HPE6-A68 Exam with 100% Guarantee

Free Download Real Questions & Answers **PDF** and **VCE** file from:

<https://www.pass2lead.com/hpe6-a68.html>

100% Passing Guarantee  
100% Money Back Assurance

Following Questions and Answers are all new published by HP Official Exam Center

- ⚙️ **Instant Download** After Purchase
- ⚙️ **100% Money Back** Guarantee
- ⚙️ **365 Days** Free Update
- ⚙️ **800,000+** Satisfied Customers



### QUESTION 1

Which CLI command is used to upgrade the image of a ClearPass server?

- A. Image update
- B. System upgrade
- C. Upgrade image
- D. Reboot
- E. Upgrade software

Correct Answer: B

When logged in as appadmin, you can manually install the Upgrade and Patch binaries imported via the CLI using the following commands:

1.  
system update (for patches)
2.  
system upgrade (for upgrades)

References: ClearPass Policy Manager 6.5 User Guide (October 2015), page 564 <https://community.arubanetworks.com/aruba/attachments/aruba/SoftwareUserReferenceGuides/52/1/ClearPass%20Policy%20Manager%206.5%20User%20Guide.pdf>

---

### QUESTION 2

What is the certificate format PKCS #7, or .p7b, used for?

- A. Certificate Signing Request
- B. Binary encoded X.509 certificate
- C. Binary encoded X.509 certificate with public key
- D. Certificate with an encrypted private key
- E. Certificate chain

Correct Answer: E

The PKCS#7 or P7B format is usually stored in Base64 ASCII format and has a file extension of .p7b or .p7c. P7B certificates contain "-----BEGIN PKCS7-----" and "-----END PKCS7-----" statements. A P7B file only contains certificates and chain certificates, not the private key. Several platforms support P7B files including Microsoft Windows and Java Tomcat.

References: <https://community.arubanetworks.com/t5/Controller-Based-WLANs/Various-Certificate-Formats/ta->

---

p/176548

### QUESTION 3

A customer wants to implement Virtual IP redundancy, such that in case of a ClearPass server outage, 802.1x authentications will not be interrupted. The administrator has enabled a single Virtual IP address on two ClearPass servers. Which statements accurately describe next steps? (Select two.)

- A. The NAD should be configured with the primary node IP address for RADIUS authentication on the 802.1x network.
- B. A new Virtual IP address should be created for each NAD.
- C. Both the primary and secondary nodes will respond to authentication requests sent to the Virtual IP address when the primary node is active.
- D. The primary node will respond to authentication requests sent to the Virtual IP address when the primary node is active.
- E. The NAD should be configured with the Virtual IP address for RADIUS authentications on the 802.1x network.

Correct Answer: DE

In an Aruba network, APs are controlled by a controller. The APs tunnel all data to the controller for processing, including encryption/decryption and bridging/forwarding data. Local controller redundancy provides APs with failover to a backup

controller if a controller becomes unavailable. Local controller redundancy is provided by running VRRP between a pair of controllers. The APs are then configured to connect to the "virtual-IP" configured for the VRRP instance.

References:

[http://www.arubanetworks.com/techdocs/ArubaOS\\_64x\\_WebHelp/Content/ArubaFrameStyles/VRRP/Redundancy\\_Parameters.htm](http://www.arubanetworks.com/techdocs/ArubaOS_64x_WebHelp/Content/ArubaFrameStyles/VRRP/Redundancy_Parameters.htm)

### QUESTION 4

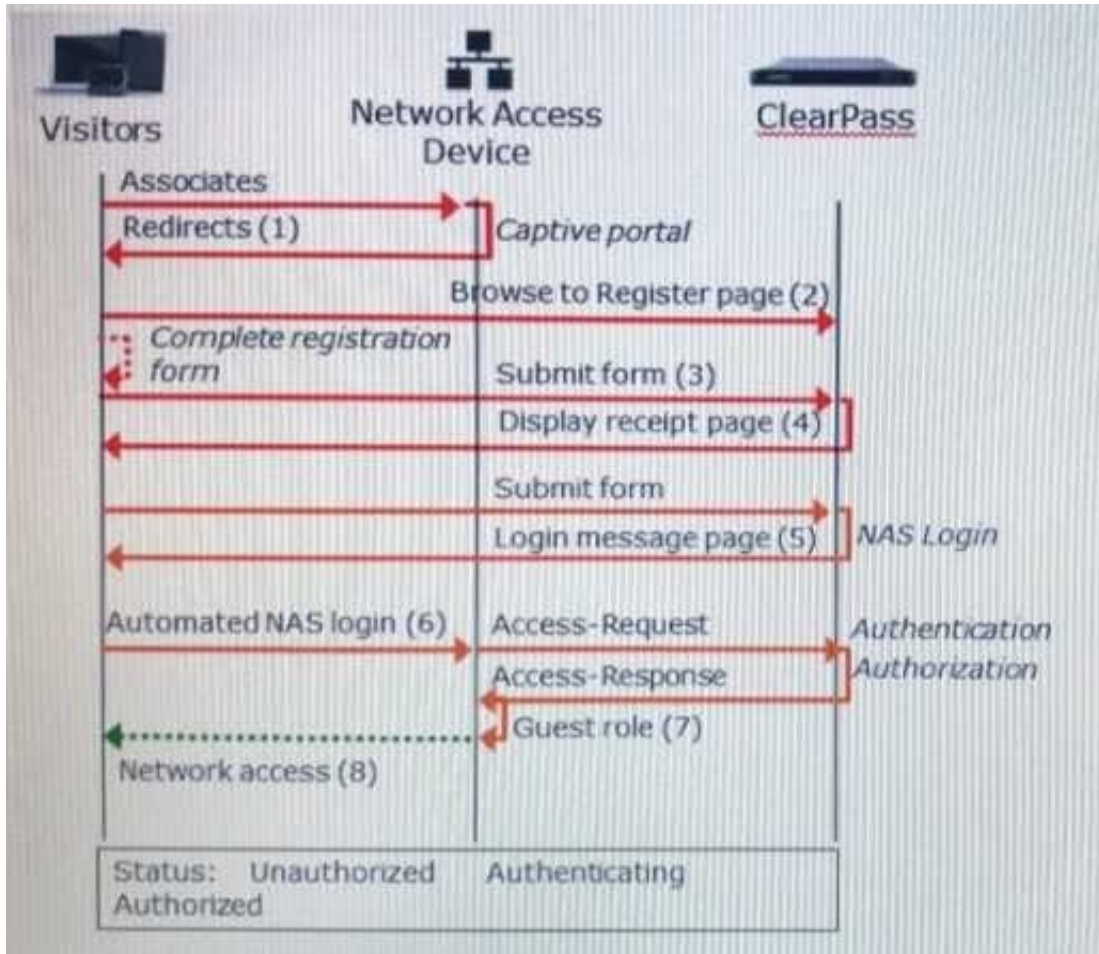
What is the purpose of ClearPass Onboard?

- A. to provide MAC authentication for devices that don't support 802.1x
- B. to run health checks on end user devices
- C. to provision personal devices to securely connect to the network
- D. to configure self-registration pages for guest users
- E. to provide guest access for visitors to connect to the network

Correct Answer: C

### QUESTION 5

Refer to the exhibit.

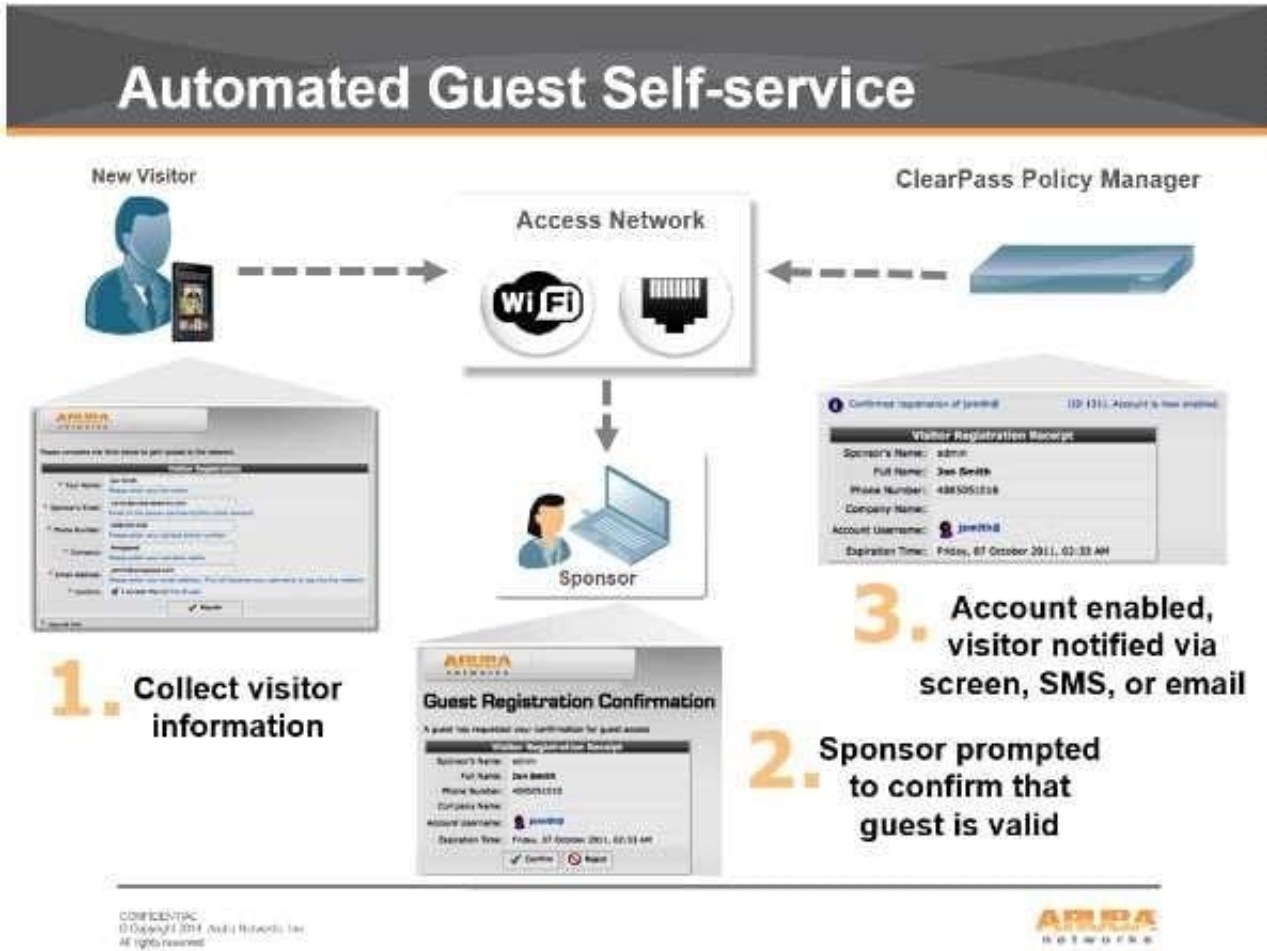


Based on the guest Self-Registration with Sponsor Approval workflow shown, at which stage is an email request sent to the sponsor?

- A. after `Guest Role (7)`
- B. after `Login Message page (5)`
- C. after `Submit form (3)`
- D. after `Automated NAS login (6)`
- E. after `Redirects (1)`

Correct Answer: C

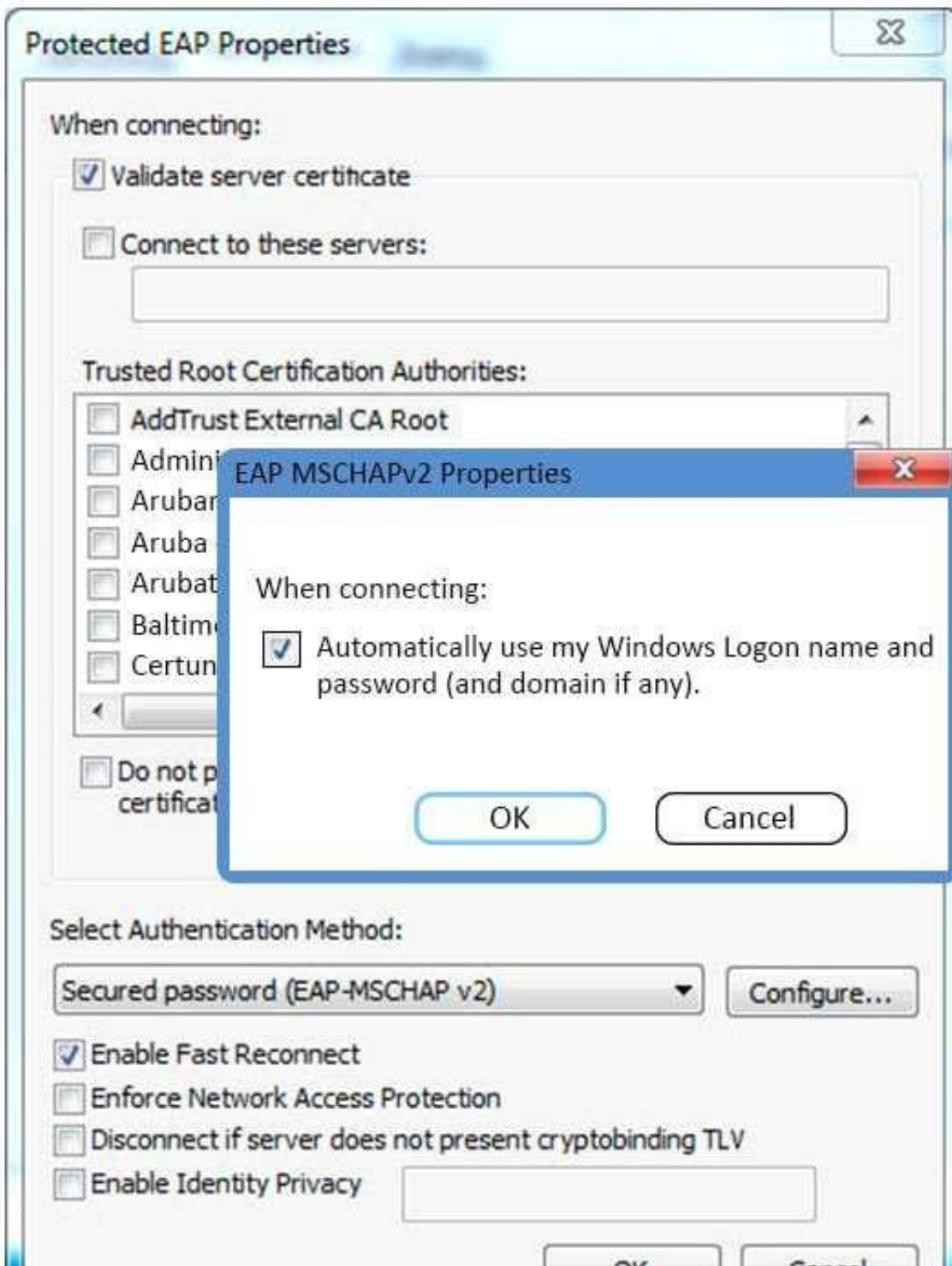
There's the Self Service part of provisioning one's information. Then the sponsor/operator part to confirm that guest is valid. Then the enablement via the sponsor/operator clicking `confirm`.



References: <https://community.arubanetworks.com/t5/Security/Guest-Captive-Portal-sponsor-approval-architecture/td-p/267625>

**QUESTION 6**

Refer to the exhibit.



Based on the configuration of a Windows 802.1X supplicant shown, what will be the outcome when 'Automatically use my Windows logon name and password' are selected?

- A. The client will use machine authentication.
- B. The client's Windows logon username and password will be sent inside a certificate to the Active Directory server.
- C. The client's Windows logon username and password will be sent to the Authentication server.

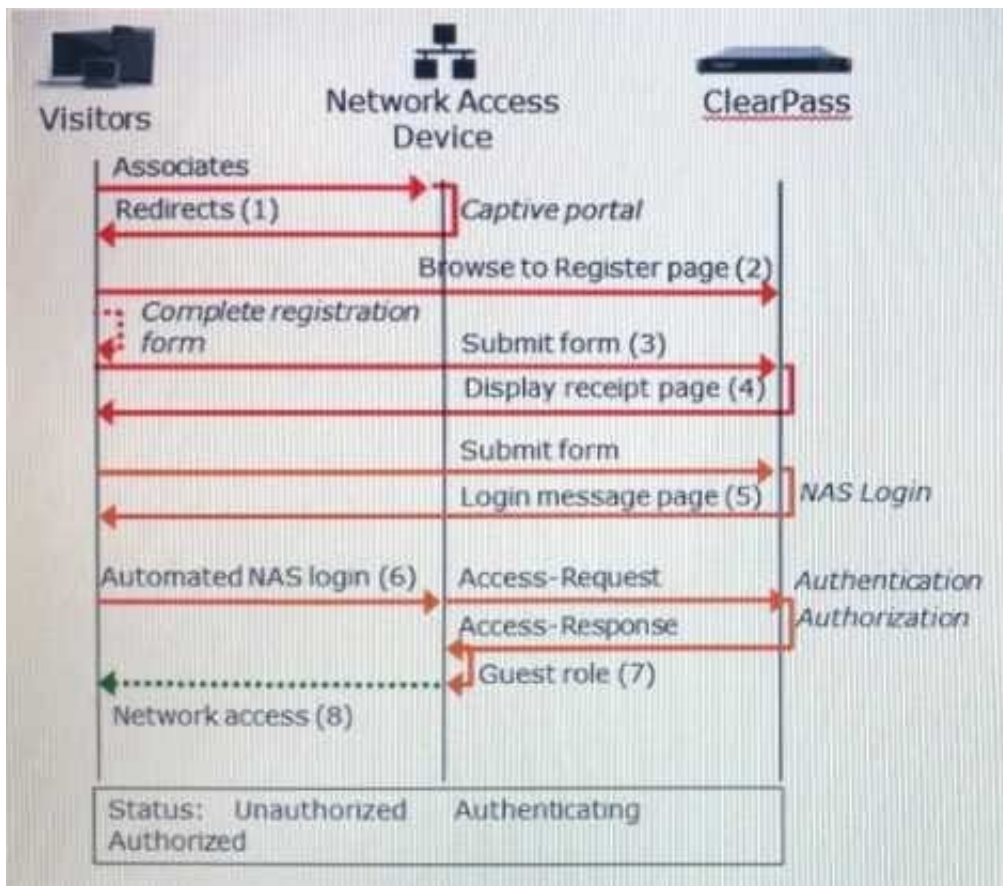


- D. The client will need to re-authenticate every time they connect to the network.
- E. The client will prompt the user to enter the logon username and password.

Correct Answer: C

**QUESTION 7**

Refer to the exhibit.



Based on the guest Self-Registration with Sponsor Approval workflow shown, at which stage does the sponsor approve the user's request?

- A. After the RADIUS Access-Request
- B. After the NAS login, but before the RADIUS Access-Request
- C. Before the user can submit the registration form
- D. After the RADIUS Access-Response
- E. After the receipt page is displayed, before the NAS login

Correct Answer: E

**QUESTION 8**

Why can the OnGuard posture check not be performed during 802.1x authentication?

- A. Health Checks cannot be used with 802.1x.
- B. OnGuard uses RADIUS, so an additional service must be created.
- C. OnGuard uses HTTPS, so an additional service must be created.
- D. OnGuard uses TACACS, so an additional service must be created.
- E. 802.1x is already secure, so OnGuard is not needed.

Correct Answer: C

OnGuard uses HTTPS to send posture information to the ClearPass appliance. For OnGuard to use HTTPS, it must have access to the network. If a customer requires 802.1x authentication on the wired switch, a separate 802.1x authentication must be used prior to the OnGuard posture check. In this example, an 802.1x PEAP-EAP-MSCHAPv2 authentication is completed first. A separate WebAuth service must be setup with posture checks to use the OnGuard agent.

References: MAC Authentication and OnGuard Posture Enforcement using Dell WSeries ClearPass and Dell Networking Switches (August 2013), page 21

---

**QUESTION 9**

A guest self-registered through a Publisher's Register page. Which statement accurately describes how the guest's account will be stored?

- A. It will be stored in the Publisher's guest user repository and the Subscriber's Onboard user repository.
- B. It will be stored in the Publisher's local user repository and the Subscriber's guest user repository.
- C. It will be stored in the Publisher's guest user repository permanently, but only for 14 days in the Subscriber's guest user repository,
- D. It will be stored in both the Publisher's guest user repository and the Subscriber's guest user repository.
- E. It will be stored in the Publisher's guest user repository, but not the Subscriber's.

Correct Answer: D

---

**QUESTION 10**

Refer to the exhibit.





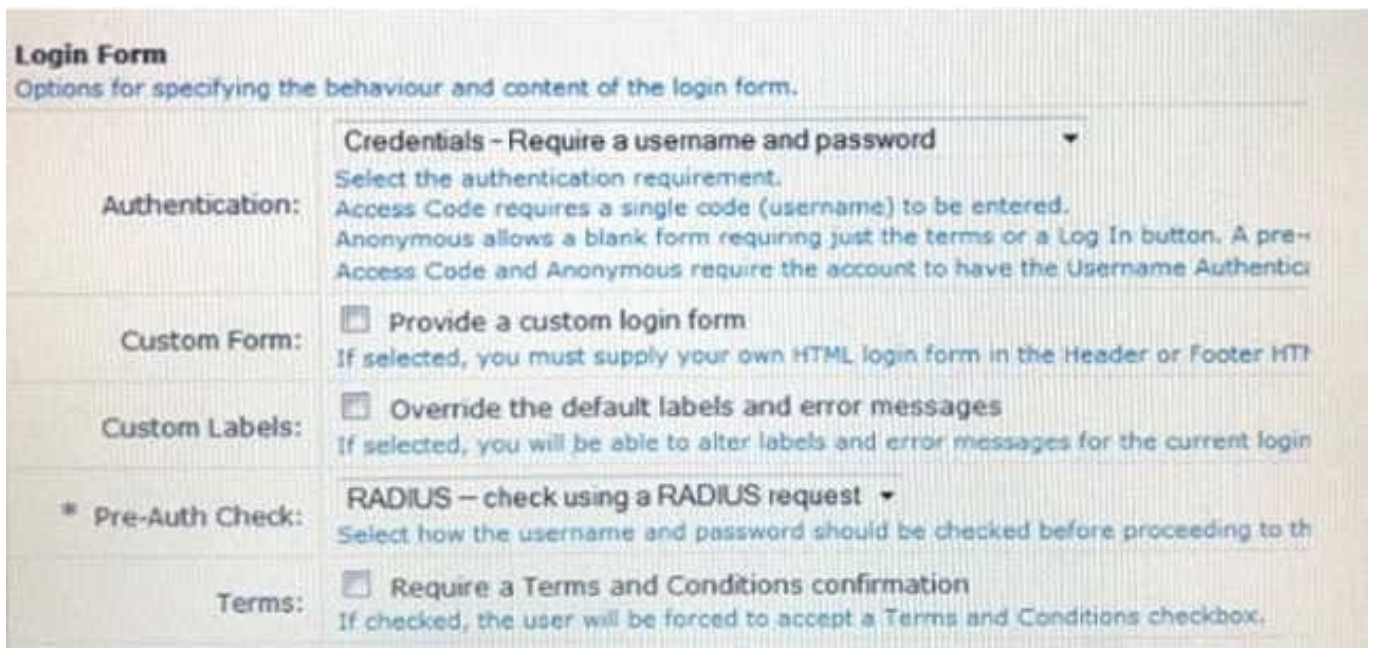
Based on the configuration for `maximum devices` shown, which statement accurately describes its settings?

- A. The user cannot Onboard any devices.
- B. It limits the total number of devices that can be provisioned by ClearPass.
- C. It limits the total number of Onboarded devices connected to the network.
- D. It limits the number of devices that a single user can Onboard.
- E. It limits the number of devices that a single user can connect to the network.

Correct Answer: D

**QUESTION 11**

Use this form to make changes to the RADIUS Web Login Guest Network.



A Web Login page is configured in Clear Pass Guest as shown. What is the purpose of the Pre-Auth Check?

- A. To authenticate users after the NAD sends an authentication request to ClearPass

- B. To authenticate users before the client sends the credentials to the NAD
- C. To authenticate users when they are roaming from one NAD to another
- D. To authenticate users before they launch the Web Login Page
- E. To replace the need for the NAD to send an authentication request to ClearPass

Correct Answer: B

---

#### **QUESTION 12**

Under which circumstances is it necessary to use an SNMP based Enforcement profile to send a VLAN?

- A. when a VLAN must be assigned to a wired user on an Aruba Mobility Controller
- B. when a VLAN must be assigned to a wireless user on an Aruba Mobility Controller
- C. when a VLAN must be assigned to a wired user on a third party wired switch that does not support RADIUS return attributes
- D. when a VLAN must be assigned to a wired user on an Aruba Mobility Access Switch
- E. when a VLAN must be assigned to a wired user on a third party wired switch that does not support RADIUS accounting

Correct Answer: C

---

#### **QUESTION 13**

Refer to the exhibit.

## Enforcement Policies - Enterprise Enforcement Policy

Summary	Enforcement	Rules
<b>Enforcement:</b>		
Name:	Enterprise Enforcement Policy	
Description:	Enforcement policies for local and remote employees	
Enforcement Type:	RADIUS	
Default Profile:	[Deny Access Profile]	
<b>Rules:</b>		
Rules Evaluation Algorithm: Evaluate all		
Conditions	Actions	
1. (Tips: Posture Equals HEALTHY (0)) AND (Tips:Role MATCHES ANY Remote Worker Role Engineer testqa) AND (Date:Day-of-Week NOT_BELONGS_TO Saturday, Sunday)	[RADIUS] EMPLOYEE_VLAN, [RADIUS] Remote Employee ACL	
2. (Tips:Role EQUALS Senior_Mgmt) AND (Date:Day-of-Week NOT_BELONGS_TO Saturday, Sunday)	[RADIUS] EMPLOYEE_VLAN	
3. (Tips:Role EQUALS San Jose HR Local) AND (Tips: Posture EQUALS HEALTHY (0))	HR VLAN	
4. (Tips:Role EQUALS [Guest]) AND (Connection:SSID CONTAINS guest)	[RADIUS] WIRELESS_GUEST_NETWORK	
5. (Tips:Role EQUALS Remote Worker) AND (Tips:Posture NOT_EQUALS HEALTHY (0))	RestrictedACL	

Based on the Enforcement Policy configuration shown, when a user with Role Remote Worker connects to the network and the posture token assigned is quarantine, which Enforcement Profile will be applied?

- A. RestrictedACL
- B. Remote Employee ACL
- C. [Deny Access Profile]
- D. EMPLOYEE\_VLAN
- E. HR VLAN

Correct Answer: B

The first rule will match, and the Remote Employee ACL will be used.

### QUESTION 14

What are Operator Profiles used for?

- A. to enforce role based access control for Aruba Controllers
- B. to enforce role based access control for ClearPass Policy Manager admin users
- C. to enforce role based access control for ClearPass Guest Admin users
- D. to assign ClearPass roles to guest users
- E. to map AD attributes to admin privilege levels in ClearPass Guest

Correct Answer: C

An operator profile determines what actions an operator is permitted to take when using ClearPass Guest.

References:

[http://www.arubanetworks.com/techdocs/ClearPass/CPGuest\\_UG\\_HTML\\_6.5/Content/OperatorLogins/OperatorProfiles.htm](http://www.arubanetworks.com/techdocs/ClearPass/CPGuest_UG_HTML_6.5/Content/OperatorLogins/OperatorProfiles.htm)

---

#### QUESTION 15

When is the RADIUS server certificate used? (Select two.)

- A. During dual SSID onboarding, when the client connects to the Guest network
- B. During EAP-PEAP authentication in single SSID onboarding
- C. During post-Onboard EAP-TLS authentication, when the client verifies the server certificate
- D. During Onboard Web Login Pre-Auth, when the client loads the Onboarding web page
- E. During post-Onboard EAP-TLS authentication, when the server verifies the client certificate

Correct Answer: CD

[Latest HPE6-A68 Dumps](#)

[HPE6-A68 Study Guide](#)

[HPE6-A68 Braindumps](#)