

JN0-348^{Q&As}

Enterprise Routing and Switching, Specialist

Pass Juniper JN0-348 Exam with 100% Guarantee

Free Download Real Questions & Answers **PDF** and **VCE** file from:

<https://www.pass2lead.com/jn0-348.html>

100% Passing Guarantee
100% Money Back Assurance

Following Questions and Answers are all new published by Juniper
Official Exam Center

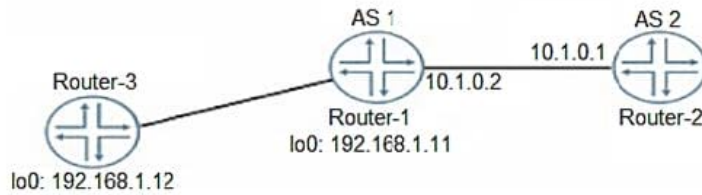
- ⚙️ **Instant Download** After Purchase
- ⚙️ **100% Money Back** Guarantee
- ⚙️ **365 Days** Free Update
- ⚙️ **800,000+** Satisfied Customers



QUESTION 1

Click the Exhibit button.

```
[edit protocols bgp]
user@Router-1# show
preference 150;
keep all;
mtu-discovery;
export statics;
remove-private;
local-as 5;
tcp-mss 4096;
group EXT {
  peer-as 2;
  neighbor 10.1.0.1;
}
group INT {
  type internal;
  local-address 192.168.1.11;
  local-as 1;
  neighbor 192.168.1.12;
}
```



```
[edit protocols bgp]
user@Router-1# run show bgp summary
Groups: 2 Peers: 2 Down peers: 1
Table Tot Paths Act Paths Suppressed History Damp State Pending
inet.0 5 4 0 0 0 0 0
Peer AS InPkt OutPkt OutQ Flaps Lasr Up/Dwn State | #Active/Received/Accepted/Damped
10.1.0.1 2 1 2 0 0 3:37 Active
192.168.1.12 1 14 15 0 0 4:05 4/5/4/0 0/0/0/0
```

Referring to the exhibit, Router-1 is attempting to form an EBGP session with Router-2. However, BGP routes are never exchanged between Router-1 and Router-2.

What is causing the problem?

- A. The TCP-MSS value is set too low
- B. The EXT group is not configured as an external type BGP peering session
- C. The EBGP session is configured to use the wrong AS
- D. The keep all statement is preventing the session from establishing

Correct Answer: B

QUESTION 2

In which two STP states is a port active and a MAC address learned? (Choose two.)

- A. blocking
- B. forwarding
- C. disabled

D. learning

Correct Answer: BD

QUESTION 3

You want to advertise only a default route into a new area, which will be called area 7. In this scenario, which configuration statement would solve this problem?

- A. user@host# set protocols ospf area 0.0.0.7 nssa default-lsa default-metric 10
- B. user@host# set protocols ospf area 0.0.0.7 stub no-summaries
- C. user@host# set protocols ospf area 0.0.0.7 stub default-metric 10
- D. user@host# set protocols ospf area 0.0.0.7 stub

Correct Answer: A

QUESTION 4

What are two advantages of a point-to-point OSPF adjacency? (Choose two.)

- A. Only a DR is elected.
- B. No type 1 LSAs are generated.
- C. No type 2 LSAs are generated.
- D. There is quicker neighbor establishment.

Correct Answer: CD

QUESTION 5

Which protocol prevents loops and calculates the best path through a switched network that contains redundant paths?

- A. VRRP
- B. STP
- C. DHCP
- D. IS-IS

Correct Answer: B

QUESTION 6

Click the Exhibit button.

```
[edit routing-options]
user@host# show
static {
    defaults {
        preference 180;
    }
    route 0.0.0.0/0 {
        next-hop 172.30.25.1;
        qualified-next-hop 172.30.25.5 {
            preference 7;
        }
    }
}
```

Which statement is true about the configuration shown in the exhibit?

- A. The preference for the 172.30.25.1 next hop is 5.
- B. The preferred next hop is 172.30.25.5.
- C. The preference for the 172.30.25.1 next hop is 7.
- D. 172.30.25.1 is the preferred next hop.

Correct Answer: B

QUESTION 7

Click the Exhibit button.

```
user@router> show ospf database
```

```
OSPF database, Area 0.0.0.0
Type      ID           Adv Rtr      Seq          Age  Opt  Cksum  Len
Router   *172.16.248.14  172.16.248.14  0x8000000c   10  0x22 0x4a3d  36
Router   172.16.248.213  172.16.248.213 0x80000002  331 0x22 0xd32f  36
Network *172.16.248.214  172.16.248.14  0x80000001   10  0x22 0x4459  32
```

Referring to the exhibit, what do the asterisks (*) indicate?

- A. The entries are new
- B. The entries are stale
- C. The router originated the entries
- D. The router received the entries

Correct Answer: C

QUESTION 8

Which statement is true about IP-IP tunnels?

- A. The time-to-live value of the original packet is decremented.
- B. IP-IP tunnels are protocol agnostic.
- C. The packet is encapsulated unchanged before entering the tunnel.
- D. The packet header is replaced before entering the tunnel.

Correct Answer: B

QUESTION 9

You have configured the router with an IS-IS interface metric of 2048. However, the IS-IS interface metric of 63 is being applied for the interface of this router.

What must you do to enable the larger metric value?

- A. Enable wide metrics.
- B. Disable narrow metrics.
- C. Restart the IS-IS protocol.
- D. Enable level 1 IS-IS routing.

Correct Answer: A

QUESTION 10

Click the Exhibit button.

```
[edit]
user@router# show interfaces
...
lo0 {
    unit 0 {
        family inet {
            address 1.1.1.1/32;
        }
        family iso {
            address 49.0001.1921.6800.1001.00;
        }
    }
}
```

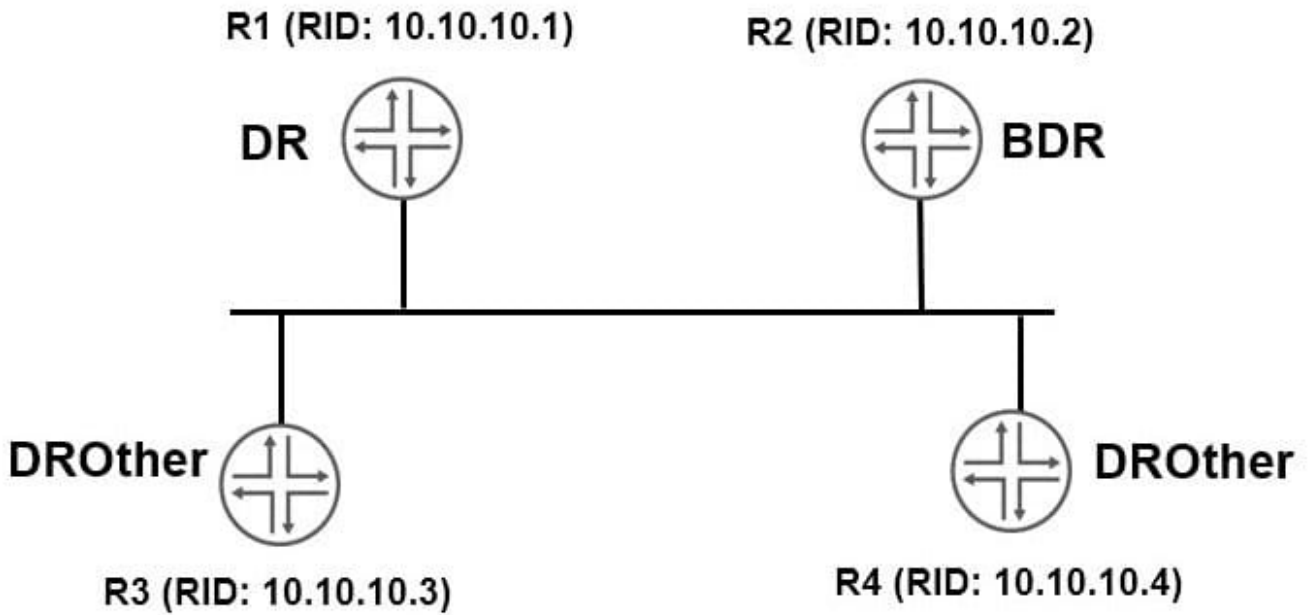
Which statement is correct about the ISO NET address shown in the exhibit?

- A. The system identifier is 6800.1001.00
- B. The area identifier is 0001
- C. The authority and format identifier (AFI) is 00
- D. This is not a valid NET address

Correct Answer: B

QUESTION 11

Click the Exhibit button.



You have configured OSPF routing as shown in the exhibit. You notice that all interfaces have formed full adjacencies, with the exception of the interfaces connecting R3 and R4 with a status of 2Way.

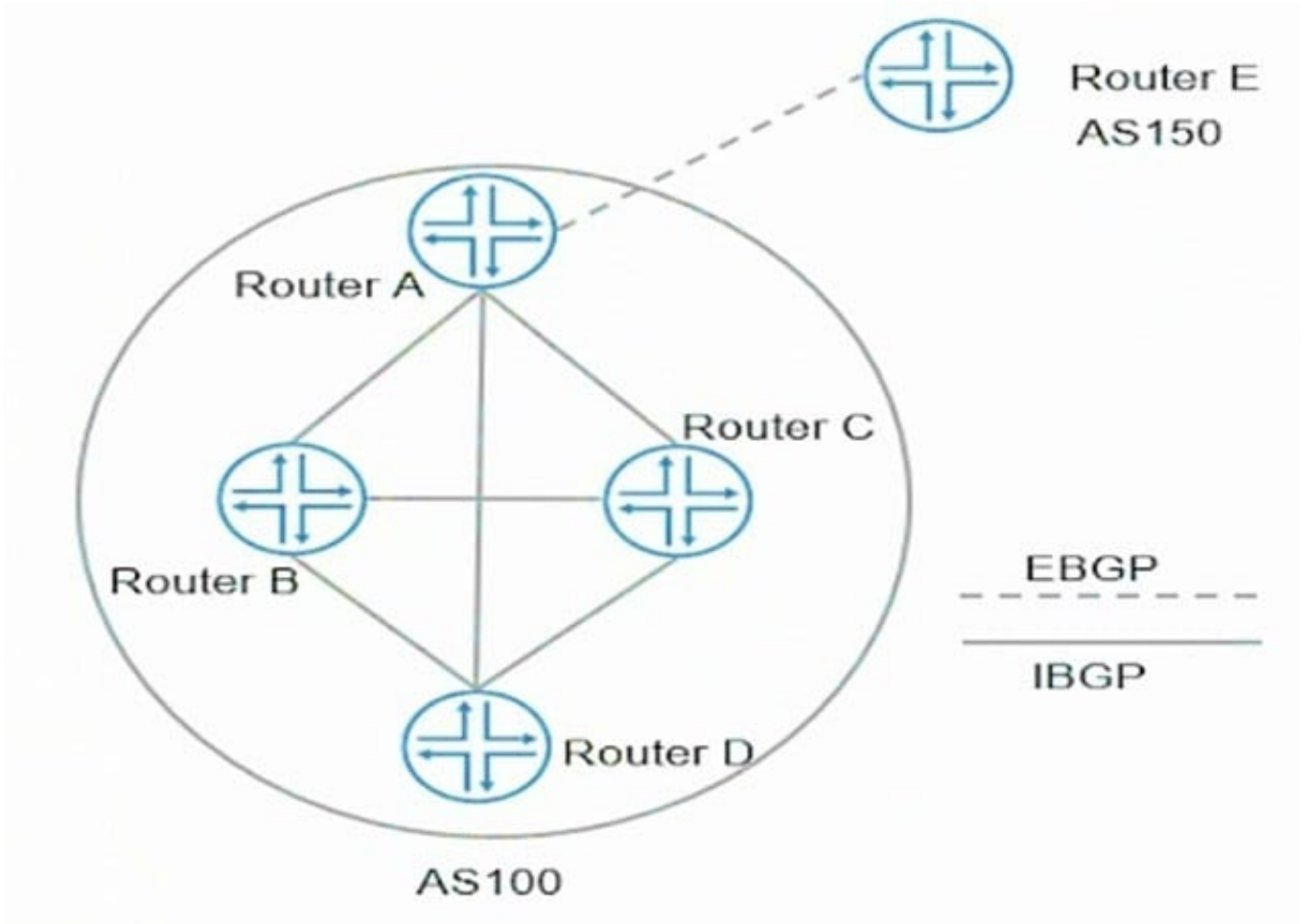
What is the reason for this status?

- A. The two routers must both be configured as DR routers.
- B. DROther routers will not form a full adjacency with each other.
- C. The two routers must be configured in different areas.
- D. The interface-type is not configured as p2p.

Correct Answer: B

QUESTION 12

Click the Exhibit button.



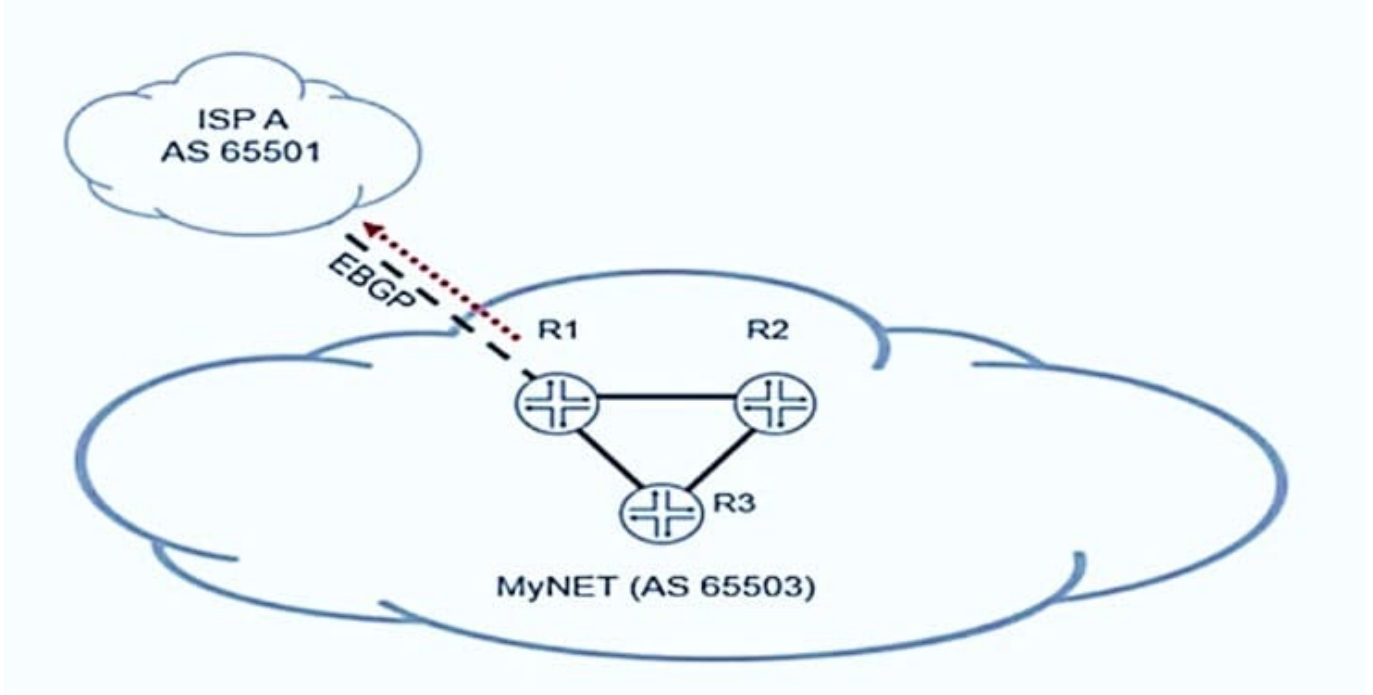
Referring to the exhibit, which two statements are correct? (Choose two.)

- A. Router A does not send routes learned from Router E to Router B, Router C, and Router D
- B. Router A sends routes learned from Router E to Router B, Router C, and Router D
- C. Router A sends routes learned from Router D to Router B and Router C
- D. Router A does not send routes learned from Router D to Router B and Router C

Correct Answer: BD

QUESTION 13

Click the Exhibit button.



Referring to the exhibit, which two statements about BGP prefixes advertised by R1 to AS 65501 are true? (Choose two.)

- A. R1 will modify the originator ID attribute in prefixes advertised to AS 65501
- B. R1 will modify the AS path attribute in prefixes advertised to AS 65501
- C. R1 will modify the next-hop attribute in prefixes advertised to AS 65501
- D. R1 will modify the cluster list attribute in prefixes advertised to AS 65501

Correct Answer: AC

QUESTION 14

What is the default BGP group type on a Junos device?

- A. internal
- B. external
- C. multihop
- D. null

Correct Answer: B

QUESTION 15

Click the Exhibit button.

```
[edit protocols bgp]
user@router# show
preference 150;
keep all;
mtu-discovery;
export static-1;
remove-private;
tcp-mss 4096;
group one {
    export static-2;
    peer-as 2;
    neighbor 10.1.0.1 {
        export static-3;
    }
}
group two {
    type internal;
    local-address 192.168.1.11;
    export static-4;
    local-as 1;
    neighbor 192.168.1.12;
    neighbor 192.168.1.13
}
```

Referring to the exhibit, which policy will export routes to IBGP peers?

- A. static-3
- B. static-4
- C. static-1
- D. static-2

Correct Answer: B