



OMG-OCUP2-INT200^{Q&As}

OMG Certified UML Professional (OCUP 2) - Intermediate Level

Pass OMG OMG-OCUP2-INT200 Exam with 100% Guarantee

Free Download Real Questions & Answers **PDF** and **VCE** file from:

<https://www.pass4lead.com/omg-ocup2-int200.html>

100% Passing Guarantee
100% Money Back Assurance

Following Questions and Answers are all new published by OMG
Official Exam Center

-  **Instant Download** After Purchase
-  **100% Money Back** Guarantee
-  **365 Days** Free Update
-  **800,000+** Satisfied Customers





QUESTION 1

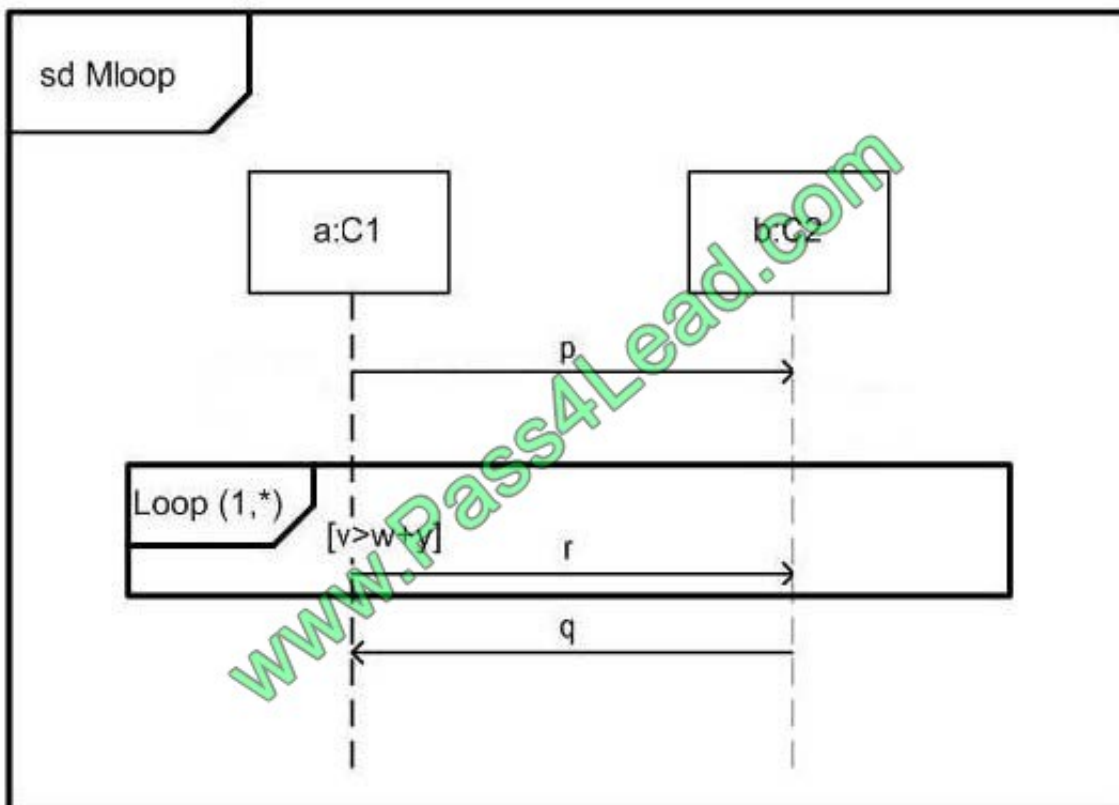
What situation results from an Apply Function Action?

- A. reads objects and produces output values
- B. produces output values
- C. writes objects and produces output values
- D. reads objects, write objects, and produces output values
- E. performs any set of UML actions

Correct Answer: B

QUESTION 2

In the exhibit, what applies if the interaction constraint is false when the loop is entered?



- A. All valid traces will include message r.
- B. Valid traces include both the case where the loop iterates once, and when it iterates zero times.
- C. The specification is illegal.



D. The loop body is not included in a valid trace.

Correct Answer: A

QUESTION 3

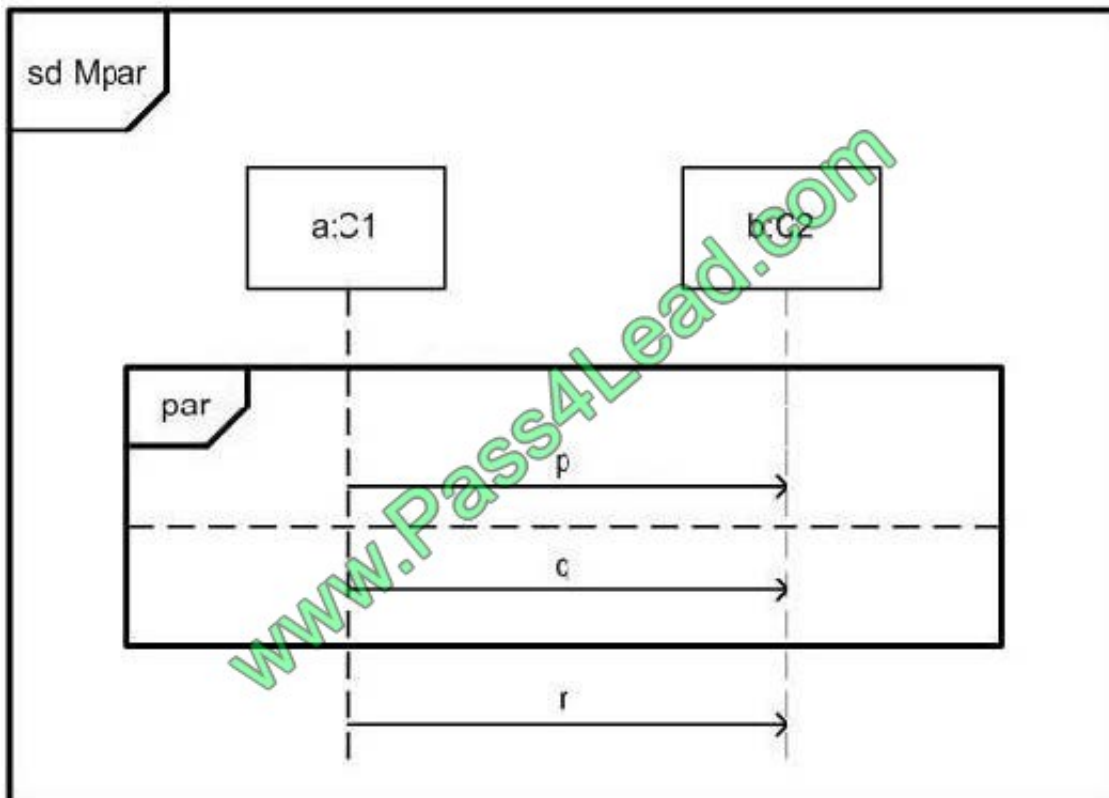
Which statements apply to arguments of interaction occurrences? (Choose two.)

- A. Arguments to interaction occurrences only apply when the corresponding interaction is value returning.
- B. The arguments may be constants (literals).
- C. An argument of an interaction occurrence must only have simple types.
- D. Arguments to interaction occurrences must always correspond to IN-parameters.
- E. The arguments may refer to parameters of the enclosing interaction.

Correct Answer: BE

QUESTION 4

In the exhibit, what is true about Mpar?



A. There are legal traces that do not contain message q.



- B. Every trace contains all three messages.
- C. Receiving p must always precede receiving q.
- D. Sending p must always precede sending q.

Correct Answer: B

QUESTION 5

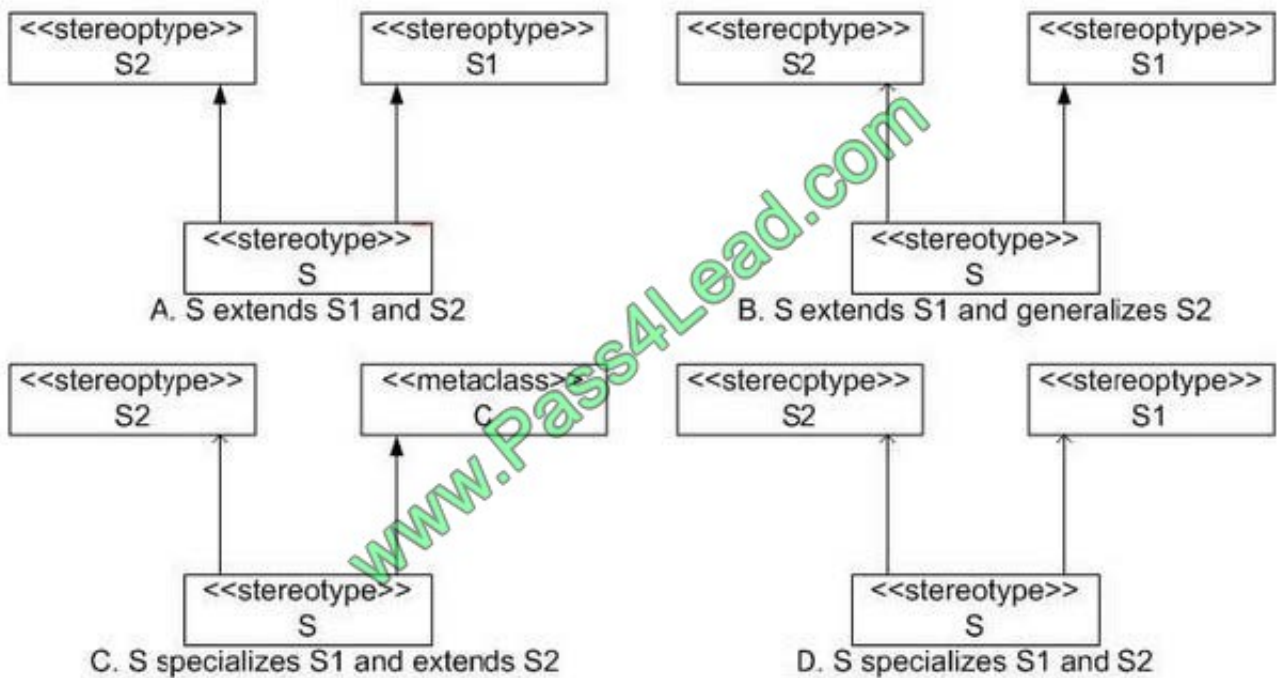
What is the primary extension construct of a profile?

- A. a stereotype
- B. a constraint
- C. a tag definition
- D. a metaclass

Correct Answer: A

QUESTION 6

Which is a correct representation of multiple extension and generalization/specialization? (Choose two.)



A. A

B. B



C. C

D. D

Correct Answer: CD

QUESTION 7

What is implied when a transition terminates on the outer border of a composite state that has an initial and a history pseudostate?

A. The outgoing transition from the final pseudostate is taken.

B. The state is not entered.

C. The outgoing transition from the initial pseudostate is taken.

D. The outgoing transition from the history pseudostate is taken.

Correct Answer: C

QUESTION 8

A protocol state machine can be used to describe which aspect of a component?

A. configuration of an assembly

B. external contract of a component

C. signal flow among connectors

D. internals of a component

Correct Answer: B

QUESTION 9

What is true when deferrable triggers of a state specify triggering events?

A. are of lower priority

B. will be consumed after the state is exited

C. are ignored in that state

D. will be consumed when a state in which they are no longer deferred is reached

Correct Answer: D



QUESTION 10

What value should insertAt be set to when adding a new value to the end of a 5-element ordered structural feature using an AddStructuralFeatureValueAction?

- A. any integer greater than 5
- B. -1
- C. infinity
- D. 0

Correct Answer: C

QUESTION 11

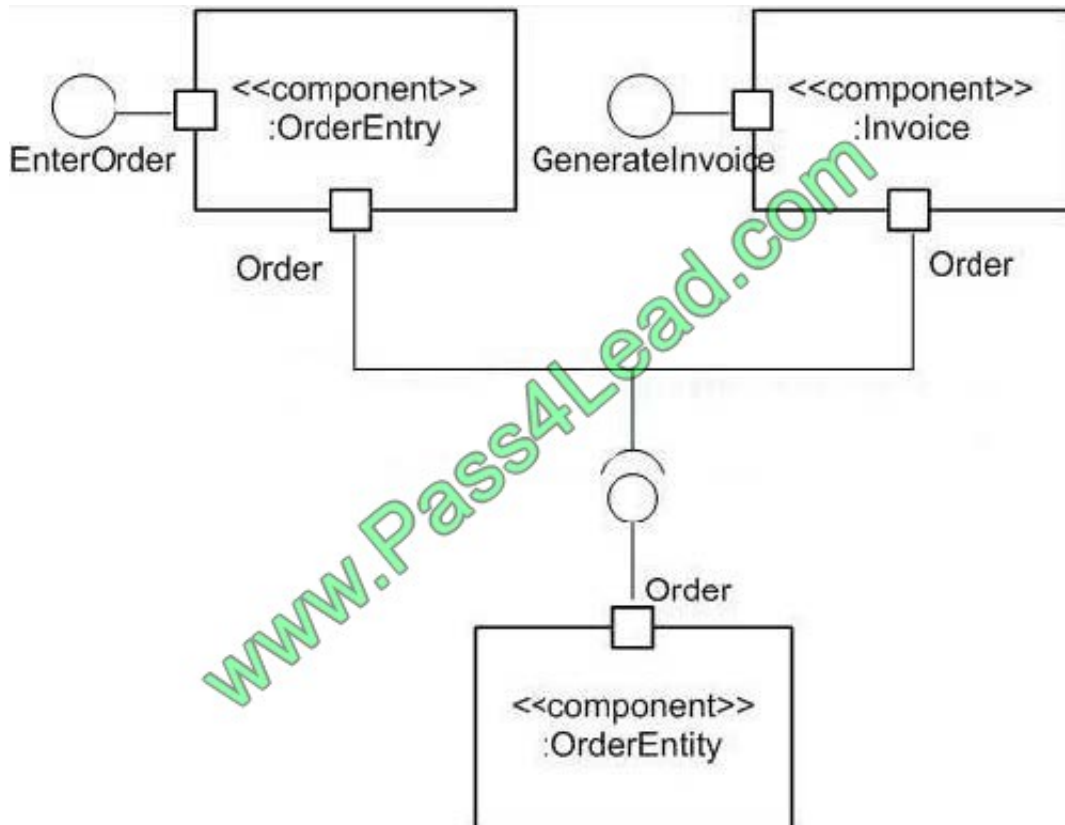
What are valid ways to present a component's artifacts file, such as a jar file? (Choose two.)

- A. stereotype of class with keyword with a solid arrow pointing to the related component
- B. stereotype of class with keyword with a dashed arrow pointing to the related component
- C. stereotype of a component with keyword with a dashed arrow pointing to the related component
- D. as a compartment of a related component
- E. stereotype of a component with keyword with a solid arrow pointing to the related component

Correct Answer: BD

QUESTION 12

What best describes the semantics modeled by the exhibit?



- A. Order Entry and Invoice are ports of Order Entry
- B. Order Entry delegates to both Order Entry and Invoice.
- C. The order Entry component and the Invoice component both require the services described by the Order interface and use an Order Entry component that provides those services.
- D. Signals travel from an Order Entry port and an Invoice port, and join into a composite signal that flows to an Order Entry port. The signals flow along instances of the Order interface.

Correct Answer: C

[OMG-OCUP2-INT200 VCE Dumps](#)

[OMG-OCUP2-INT200 Practice Test](#)

[OMG-OCUP2-INT200 Exam Questions](#)



To Read the [Whole Q&As](#), please purchase the [Complete Version](#) from [Our website](#).

Try our product !

100% Guaranteed Success

100% Money Back Guarantee

365 Days Free Update

Instant Download After Purchase

24x7 Customer Support

Average 99.9% Success Rate

More than 800,000 Satisfied Customers Worldwide

Multi-Platform capabilities - [Windows](#), [Mac](#), [Android](#), [iPhone](#), [iPod](#), [iPad](#), [Kindle](#)

We provide exam PDF and VCE of Cisco, Microsoft, IBM, CompTIA, Oracle and other IT Certifications. You can view Vendor list of All Certification Exams offered:

<https://www.pass4lead.com/allproducts>

Need Help

Please provide as much detail as possible so we can best assist you.

To update a previously submitted ticket:



 <p>One Year Free Update Free update is available within One Year after your purchase. After One Year, you will get 50% discounts for updating. And we are proud to boast a 24/7 efficient Customer Support system via Email.</p>	 <p>Money Back Guarantee To ensure that you are spending on quality products, we provide 100% money back guarantee for 30 days from the date of purchase.</p>	 <p>Security & Privacy We respect customer privacy. We use McAfee's security service to provide you with utmost security for your personal information & peace of mind.</p>
---	---	--

Any charges made through this site will appear as Global Simulators Limited.

All trademarks are the property of their respective owners.

Copyright © pass4lead, All Rights Reserved.